

CorkSport 2-Way Adjustable Rear Sway bar

2007-2012 Mazdaspeed 3



Thank you for purchasing the CorkSport Mazdaspeed 3 Rear Adjustable Sway Bar. Our sway bar will help remove the vehicles tendency to overpower the front tires under hard cornering and minimize traction robbing body lean. The CorkSport Mazdaspeed 3 Rear Sway Bar adjustability allows you to fine tune the handling. We hope you enjoy your new part! Please let us know your feedback by submitting a review at <http://www.corksport.com/corksport-mazda3-mazdaspeed-3-rear-adjustable-swaybar.html>

Pre-Installation Notes:



Make sure your vehicle is on a level surface prior to starting installation.



These instructions were written for reference only and the use of a factory service manual is recommended. Please read these instructions thoroughly prior to starting installation.



How our instructions work: To best cover all of our customers experience levels, we have included a table of contents/order of operations along with step-by-step instructions.



These installation instructions were written using a 2013 Mazdaspeed3. Other year Mazda 3 and Mazdaspeed 3 models will be similar.

Materials and Time:



General Info.

Part #: Axl-3-070
Time Est: 45 min
Wrench Rating: 2/5



Tooling List

3/8 or 1/2" Ratchet
14mm Socket or box wrench
17mm Box wrench
5mm Allen wrench
3mm Allen Wrench
Torque wrench
Grease



Parts List

One (1) CorkSport Rear Sway Bar
Two (2) Polyurethane Bushings Assemblies
Two (2) Clamp Collars
One (1) Grease Packet

Need Help With Your Installation?

Call (360) 260-CORK



Part # AXL-3-070



Order of Operations & Table of Contents



Support Car on Jackstands

Section 1: Jack Vehicle Up

Pg. 2



Disassembly and Removal

Section 2: Remove the stock rear sway bar Continued

Pg. 2-3



Installation and Assembly

Section 3: Install the CorkSport 2-way adjustable rear sway bar

Pg. 4-7

Detailed Instructions

1. Support Car on Floor Jack/Jackstands or Lift

- a) Verify that the vehicle is on a level and stable surface.
- b) Use a floor jack and jackstands to lift the vehicle and gain access to the rear of the vehicle.



Always refer to the floor jack and jack stand manufactures instructions as well as the factory owners manual for your vehicle to determine jacking points and support points. Alternately, use an automotive lift to gain access to the underside of the vehicle.

2. Remove the stock rear sway bar

- a) Remove the four (4) rear subframe brace bolts (shown with red circles in Figure 2a). Use a ratcheting wrench and a 14mm socket.



The rear subframe brace is only installed on Mazdaspeed 3 cars from 2007-2009.

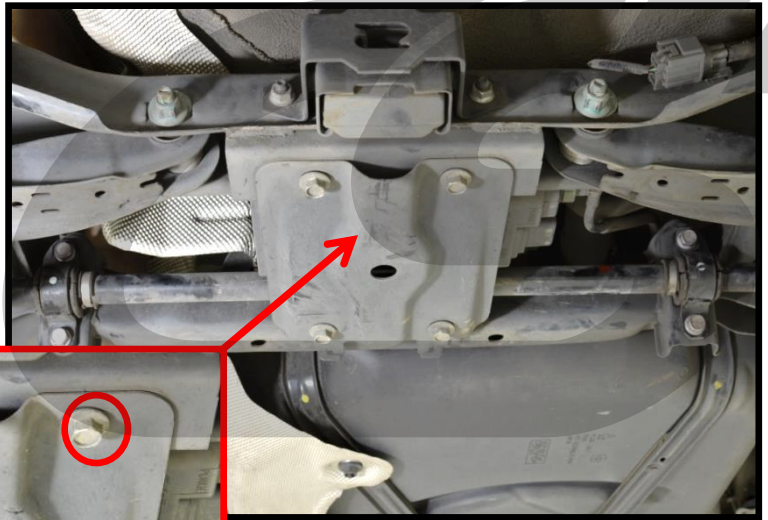


Figure 2a

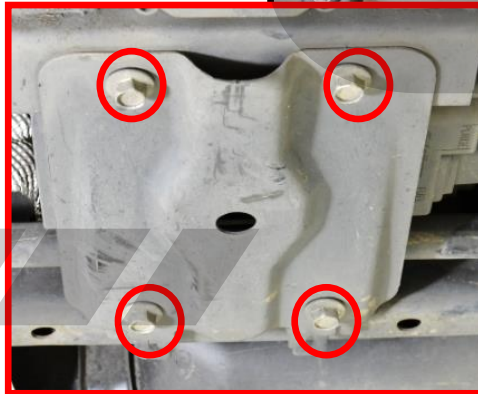


Figure 2b

- b) Remove the upper sway bar end link nuts using the 14mm box wrench and 5mm Allen wrench. Figure 2b shows the passenger's side end link.



2. Remove the stock rear sway bar Continued

c) Remove the lower sway bar end link nuts using the 17mm box wrench and 5mm Allen wrench. **Figure 2c** shows the passenger's side end link.



Figure 2c

d) Remove the endlinks. They will be reinstalled later.



e) Remove the swaybar collars holding the bar to the subframe. Use a 14mm socket and ratcheting wrench. **Figure 2d** shows the passenger side swaybar collar bolts circled in red.



Figure 2d

f) Remove the swaybar from the car.

3. Install the CorkSport 2-way adjustable rear sway bar

- a) Apply grease around the inside of the bushings. Make sure to fill the ribs shown in [Figure 3a](#).



You may re-grease the bushings after installing if you have a grease gun. This can be easily done on the car with the Zerk's fittings. However, please initially grease them before install.

Zerk's Fitting

Apply Grease



Figure 3a

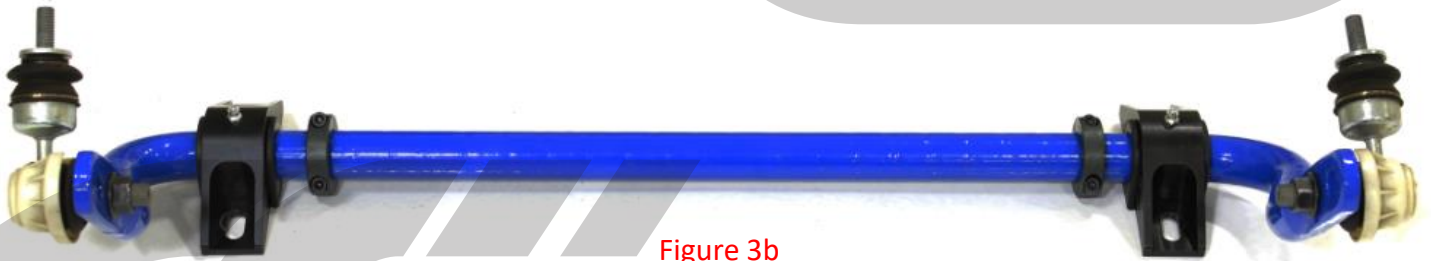


Figure 3b

- b) Assemble the sway bar brackets on the CorkSport Rear Sway bar. Refer to [Figure 3b](#) for final assembly and [Figure 3c](#) for a detailed picture.

Swaybar Bushing

Swaybar Bracket

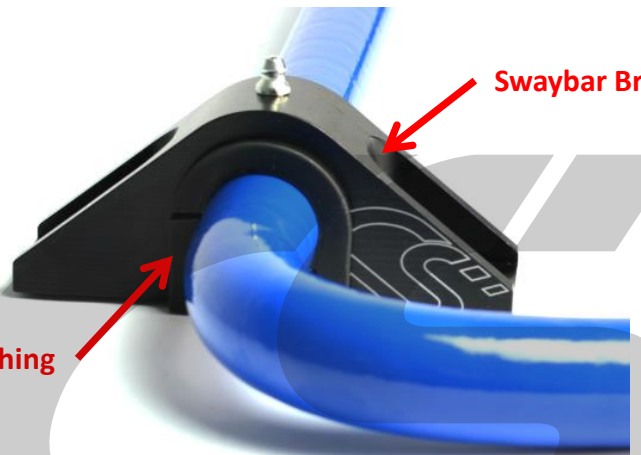


Figure 3c

3. Install the CorkSport 2-way adjustable rear sway bar continued...

- c) Assemble the sway bar collars on the CorkSport Rear Sway bar. Refer to **Figure 3b** for final assembly and **Figure 3d** for a detailed picture.



Do not tighten down the collar. Just install it to be tightened on the car later.



Figure 3d



- d) Assemble the factory endlink onto the CorkSport Rear Sway bar. There are two setting. We suggest starting on the stiffest setting as shown in **Figure 3e**. Final assembly shown in **Figure 3b**.

Less Firm

More Firm

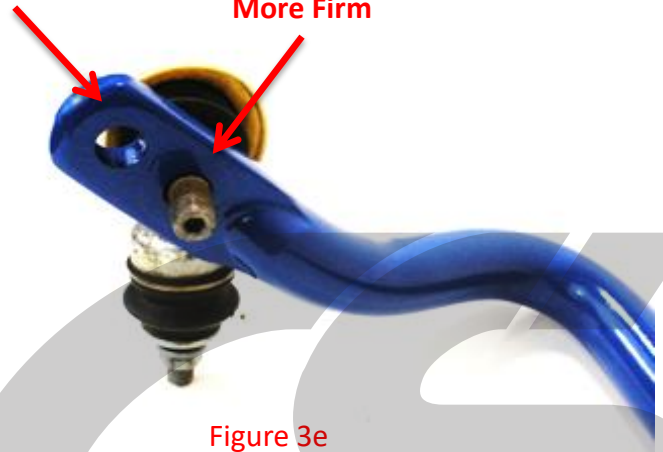


Figure 3e

3. Install the CorkSport 2-way adjustable rear sway bar continued...

- e) Put sway bar into approximate mounting location and reinstall the four bolts for the sway bar brackets removed earlier. Center the bar and tighten the bolts to 50 ft-lbs. Bolts are shown in red circles in Figure 3f.



Figure 3g

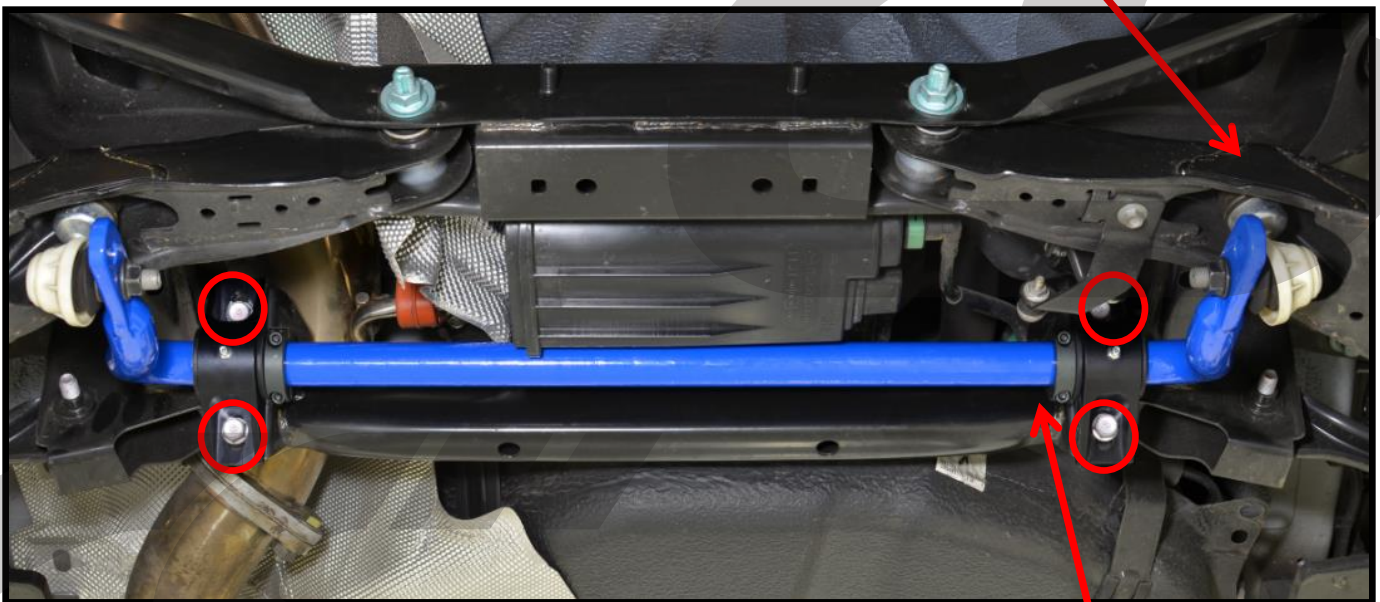


Figure 3f

- f) Re-install the endlink into the upper hole in the control arm. Tighten to 40 ft-lbs. Final assembly shown in Figure 3g.

- g) Push the sway bar collar over until it touches the sway bar bushing. Tighten to 5-8 ft-lbs with a 3mm Allen. Figure 3h shows the collars installed tightly against the swaybar bushing.



Figure 3h

3. Install the CorkSport 2-way adjustable rear sway bar continued...

- e) Tighten the lower endlink attached to the CorkSport sway bar. Tighten to 40 ft-lbs. Final assembly shown in **Figure 3i**.



Figure 3i

- f) Re-install sub-frame brace from step 2a using a 14mm socket and wrench. Refer to **Figure 2a** for reinstallation.



Stiffer Setting

Softer Setting

- g) Remove the car from the jack stands / lower lift



This completes the installation of your CorkSport 2-Way Adjustable Rear Sway Bar. Take your vehicle for a test drive and adjust the stiffness of the bar if needed. Enjoy!

What's Next:

CorkSport VTA BPV

The CorkSport Binary VTA BPV provides features and performance to suit stock cars and on up to big turbo high power setups. The CorkSport Binary VTA BPV holds 50psi, responds in 50 milli-sec, and won't stall your car every shift. All this comes in a compact design with nozzle adjustability to allow for easy installation in even the most cramped engine bay or with custom piping.



CorkSport DISI MZR Fuel Injector Seals

CorkSport DISI MZR Fuel Injector Seals for the 2007-2013 Mazdaspeed 3 & 2006-2007 Mazdaspeed 6. Constructed from beryllium copper; the CorkSport fuel injector seals will lock in every PSI of boost so that every bit of your hard earned horsepower keeps you moving forward.



CORKSPORT Mazdaspeed 3 Radiator Panel

Add some style to your engine bay with the CorkSport Mazdaspeed 3 Radiator Panel.

The CorkSport Mazdaspeed Radiator Panel is made from 5052 aluminum and features a textured powder coated surface. Get that clean look you have always wanted.

