

# CorkSport Urethane Exhaust Hangers

2010+ Mazda 3 & Mazdaspeed3



**Thank you for purchasing the CorkSport Mazda 3 and Mazdaspeed Urethane Exhaust Hangers.** Combining a new exhaust system with the stock rubber exhaust hanger allows for movement under normal driving conditions and can cause a thumping of the exhaust touching the underside of your car when going over bumps or navigating potholes. Installing the CorkSport exhaust hangers will limit the excessive movement of your performance exhaust and keep you system tightly in place. Please let us know your feedback by submitting a review at: <http://www.corksport.com/corksport-urethane-exhaust-hangers-for-the-2010-mazda-3-mazdaspeed-3.html>

## Pre-Installation Notes:



**Working under a vehicle on jackstands or a lift is safe only when you obey the instructions and safety recommendations of the manufacturer.** Always use redundant support devices, always work on a flat level surface that is made of a hard material like concrete. Asphalt and dirt can bury a jackstand and bring your car down on top of you. When in doubt, take your car to a trained professional.



**Wearing safety glasses for this job is extremely important .** There's a lot of grime under your car and silicone spray in your eyes is not by any means a great way to start your Saturday night.



**These instructions were written for reference only** and the use of a factory service manual is recommended. Please read these instructions thoroughly prior to starting installation



**Video instructions are provided in the instructions,** the link shortened addresses are case sensitive and it helps to watch the videos ahead of time to familiarize yourself with some tricks of the installation.

## Materials and Time:



### General Info.

Part #: Axl-6-087

Time Est: 30 Minutes

Wrench Rating: 2/5



### Tooling List

Silicone Spray or WD-40

Medium Flathead Screwdriver

Box End Wrench

Mechanics Gloves

Shop Towel or Rag

Pair of Safety Glasses



### Parts List

#### Single Exhaust:

2x 10mm Hangers

1x 12mm Hangers

1x Twist-in Style Hanger

#### Dual Exhaust:

2x 10mm Hangers

3x 12mm Hangers

1x Twist-in Style Hanger


Need Help With Your Installation?

Call (360) 260-CORK

## Detailed Instructions

### 1. Support Car on Floor Jack/Jackstands or Lift

Use a floor jack and jackstands to gain access to the underside of the vehicle

 Always refer to the Floor Jack and Jackstand manufacturers instructions as well as the factory owners manual for your vehicle to determine jacking points and support points. Alternately, use an automotive lift to gain access to the underside of the vehicle. Redundant support mechanisms are recommended.

### 2. Install Exhaust Hangers

A) The location of each of the hangers are shown in Figure 2a and 2B. The **red circles** in **Figure 2A** indicate locations for the single exit exhaust and the **three green circles** in Figures 2A and 2B indicate the additional locations for the dual exit. The **blue circle** indicates the location for the twist-in style hanger shown in **Figure 2C** that will be used in both the single and dual exit exhaust installation

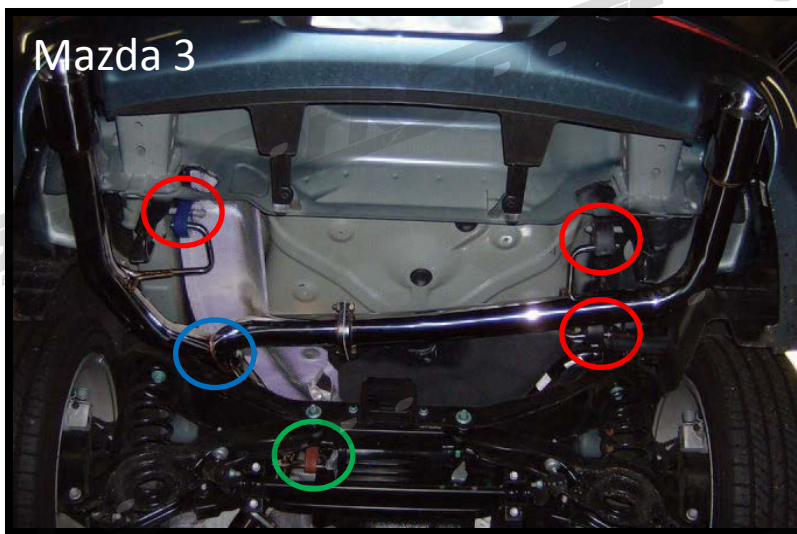


Figure 2A

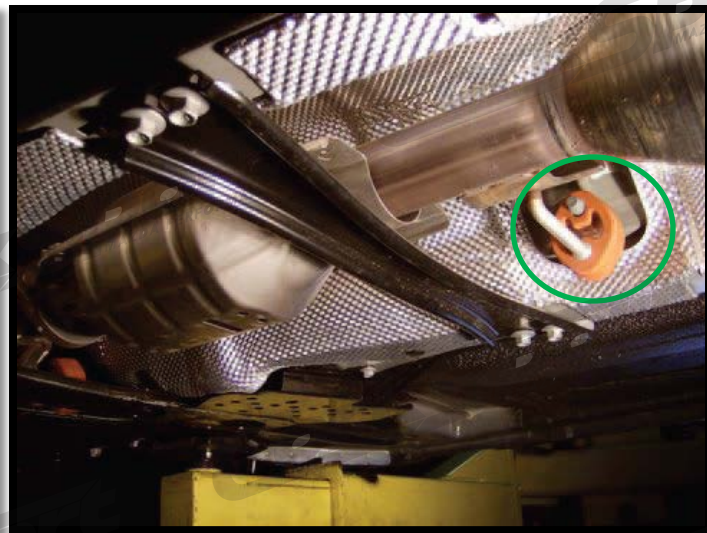


Figure 2B

B) Lubricate holes in factory hangers with silicone spray or WD-40. Pull down on exhaust system if necessary to open holes in hangers up to get spray onto the hangers inside the bushings. This is critical to get the hangers off easily.

C) One at a time, pull a factory hanger off of the exhaust and then the chassis hanger lug using your hands, a pry bar or a box end wrench and fulcrum as shown in our video instructions here:



<http://bit.ly/8zS1DF> The choice piece of advice here is work smarter, not harder. Leverage at the right point is critical to remove the hangers and can be done almost effortlessly if done well.



The **red circles** in **Figure 2A** are 12mm and the **green circles** are 10mm

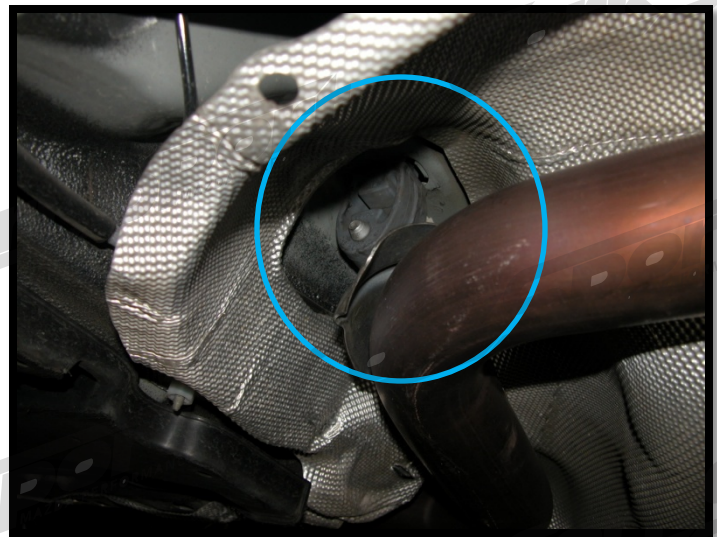


Figure 2C



## Detailed Instructions

- E) Spray the holes on the Urethane bushings and the hanger rods with silicone spray and press the bushings over the hanger on the body of the car, and then the hanger on the exhaust.
- F) Repeat on the next bushing until you're done with all four or six of them depending on single / dual exhaust configuration.



**This completes the installation of your exhaust hangers. Check to make sure that the exhaust is properly aligned and clears any obstructions. Move the exhaust by hand to check range of motion and ensure that it won't the car anywhere (subframes, etc). You can adjust the hangers as shown in the video instructions here: <http://bit.ly/8DNCZw> as necessary.**

## What's Next:

### [CorkSport Motor Mount Inserts](#)

**Reduce wheel hop and driveline slack to get a direct feel from your drivetrain** with the CorkSport Mazdaspeed 3 Motor Mount Inserts. Unlike complete replacement motor mounts on the market which can transmit excessive vibration, the CorkSport Motor Mount Inserts fill in the gaps in the factory mount allowing it to retain its vibration isolation while providing a simple and cost effective upgrade to your Mazda for a more enjoyable driving experience.



### [CorkSport Aluminum Skidplate](#)



**Get solid protection against rocks and road debris and prevent damage to key components of your undercarriage with the Mazda 3\* and Mazdaspeed 3 Skid Tray.** Made from 0.090" precision machined aluminum, the CorkSport Skid Plate will provide maximum protection while adding minimal weight to the body of your vehicle. This one-piece precision bent skid plate is angled for a tight fit and structural rigidity and is CAD designed to mount further back on the sub frame with extra attachment points so it won't snag or hang up on objects under your vehicle.