

CorkSport SkyActiv Manual Transmission Shifter Bushings

2014+ Mazda 3, 2014+ Mazda 6, 2013+ CX-5



Thank you for purchasing the CorkSport 2014+ Mazda 3 Shifter Bushing Kit: Eliminate side to side compliance and remove the slack on your shifter by replacing the rubber OEM shifter bushings on your 2014+ Mazda 3 with the CorkSport aluminum black anodized shifter bushings. Replacing the soft OEM shifter bushings with CorkSport's durable billet aluminum shifter bushings will provide a noticeable difference in the way your car drives and improve shift responsiveness for years to come. Please let us know your feedback by submitting a review at: <http://www.corksport.com/corksport-2014-mazda-3-shifter-bushing-set.html>

Pre-Installation Notes:



Make sure your clothes, tools and hands are clean while working on the interior of your car.



The shifter bushings will only fit the above referenced models. If you have a different model Mazda, these bushings will not work on your vehicle.



These instructions were written for reference only and the use of a factory service manual is recommended. Please read these instructions thoroughly prior to starting installation



These installation instructions were written using a 2014+ Mazda 3, 2014+ Mazda 6, & 2013+ CX-5. Please follow the instructions for interior panel removal of your specific model, but installation of the shifter bushings is similar for each model.

Materials and Time:



General Info.

Part #: Axm-6-958
Time Est: 0.5 hours
Wrench Rating: 2/5



Tooling List

Phillips Head Screw Driver
Socket Wrench
12" Socket Extension
12mm Deep Socket
10mm Deep Socket
Torque wrench



Parts List

Four (4) Shifter Bushings (Bottom)
Four (4) Shifter Bushing (Top)

Need Help With Your Installation?
Call (360) 260-CORK

Detailed Instructions (CX-5)

- Instructions for panel removal in the Mazda 6 start on Pg. 2
- Instructions for panel removal in the Mazda 3 start on Pg. 3

1. Remove the Shifter Housing

- a) Remove the shift knob by twisting it counter-clockwise (Figure 1a).



Figure 1a

- b) Remove the shift boot panel by grasping inside the boot (where shown by red arrow) and pulling upward (Figure 1b).



Figure 1b

- c) Unscrew the two (2) Phillips head screws fastening the shift boot bracket to the center console (red circles in Figure 1c). Set the bracket aside.

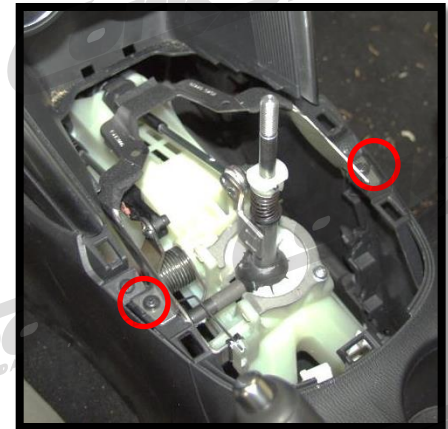


Figure 1c

- d) Remove the cup holder panel. Open the armrest lid, remove the parking brake boot by unbuttoning it and unzipping it, then lift upward on the panel (where shown by red arrow in Figure 1d).



Figure 1d

Detailed Instructions (Mazda 6)

1. Remove the Shifter Housing

- a) **Unfasten the parking brake boot** by first unbuttoning then unzipping the boot. (Figure 1a).



Figure 1a

- b) **Remove the cup holder/parking brake panel.** Starting at the rear of the panel (under the armrest), pull the panel upward firmly (red arrows Figure 1b). Then work your way forward, on each side, to the shifter panel releasing each clip (red circles Figure 1b). Lastly, there is one clip on the front of the panel connected to the shifter panel (red dot Figure 1b). This may require significant effort to disengage the clips.



Figure 1b: Back View



Figure 1b: Side View

- c. **Disconnect the Commander Control wires (if equipped).** Pinch the connector and pull it out of the panel. (Figure 1c).



Figure 1c

- d. **Remove the shifter panel. Remove the shift knob** by unthreading it. Starting at the rear of the panel, pull the panel upward firmly (red arrow Figure 1d). Then work your way forward, on each side, releasing each clip (red dots Figure 1d). A flathead screwdriver may be used to pop the clips loose. Use tape to protect the interior trimming. This may require significant effort to disengage the clips.

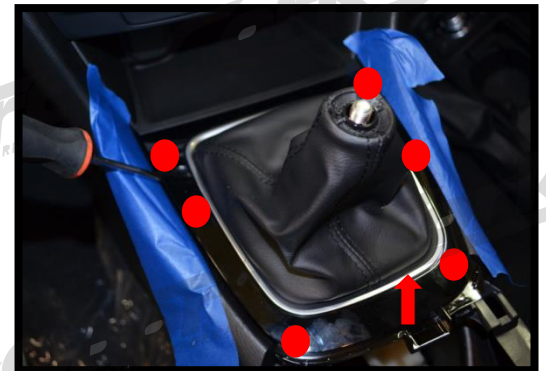


Figure 1d

Detailed Instructions (Mazda 3)

1. Remove the Shifter Housing

- a) **Unfasten the parking brake boot** by first unbuttoning (circled in red) then unzipping the boot (Figure 1a).



Figure 1a

- b) **Remove the cup holder/parking brake panel.** Starting at the rear of the panel (under the armrest), pull the panel upward firmly (red arrows Figure 1b). Then work your way forward, on each side, to the shifter panel releasing each clip (red circles Figure 1b). Lastly, there is two clips on the front of the panel connected to the shifter panel (red dots Figure 1b). This may require significant effort to disengage the clips.

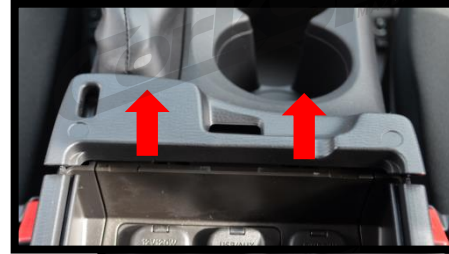


Figure 1b: Back View



Figure 1b: Side View

- c. **Disconnect the Commander Control wires (if equipped).** Pinch the connector and pull it out of the panel. (Figure 1c).



Figure 1c

- d. **Remove the shifter panel. Remove the shift knob** by unthreading it. Starting at the rear of the panel, pull the panel upward firmly (red arrow Figure 1d). Then work your way forward, on each side, releasing each clip (red dots Figure 1d). A flathead screwdriver may be used to pop the clips loose. Use tape to protect the interior trimming. This may require significant effort to disengage the clips.



Figure 1d



Detailed Instructions (all models)

1. Remove the Shifter Housing (continued)

- e) Remove the shifter cables from the shift lever. Simply pull the black cable from the stud (red arrow) and remove the 10mm nut (red circle) with a socket wrench (Figure 1e).

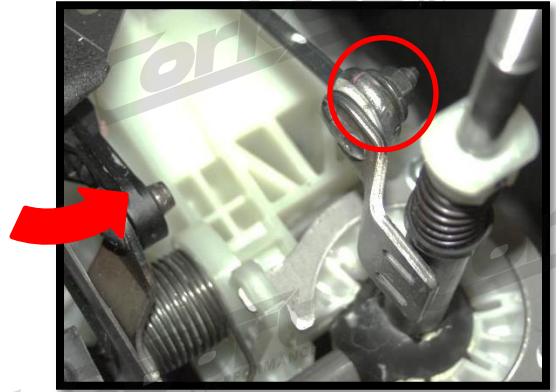


Figure 1e

- f) Using a deep 12mm socket with extension, remove the four (4) 12mm nuts (red circles) fastening the shifter housing to the console floor (Figure 1f).

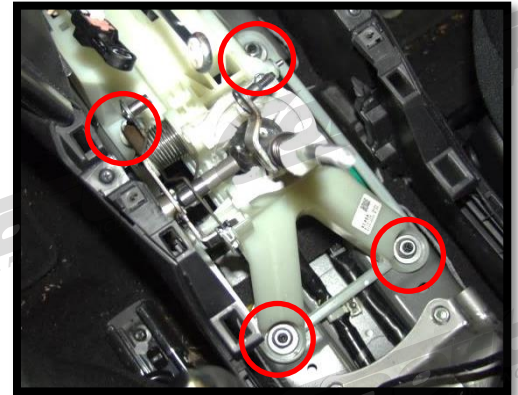


Figure 1f

- g) Pull the shifter housing upward (red arrow in Figure 1e). Once the housing is free from the mounting studs release the shifter cables by pulling them upward out of the shifter housing (red arrows in Figure 1g).

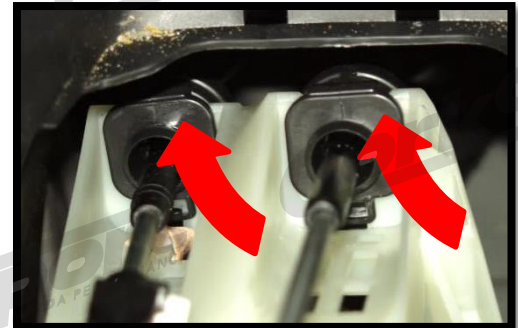


Figure 1g

- h) Remove the shifter housing from the center console.

- i) Remove the four (4) factory shifter bushings from the shifter housing. Pry the metal washers out and remove all four (4) rubber grommets from the shifter housing (Figure 1h).



Figure 1h

Detailed Instructions

2. Install the CorkSport Shifter Bushings

- a) **Locate the four (4) Shifter housing mounting studs** on the floor of the center console (red circles in Figure 2a).
- b) **Place the four CorkSport bottom shifter bushings over the mounting studs** (as shown in Figure 2b). Have the smaller side up.

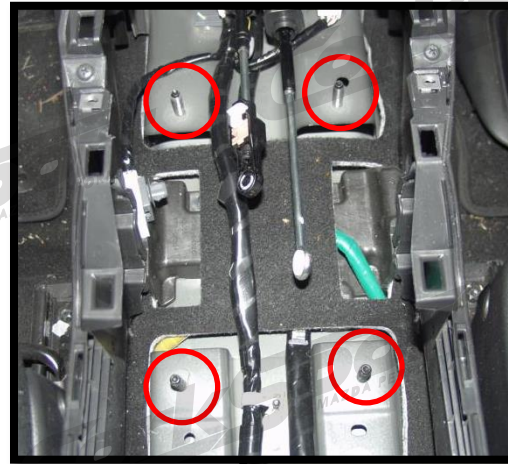


Figure 2a

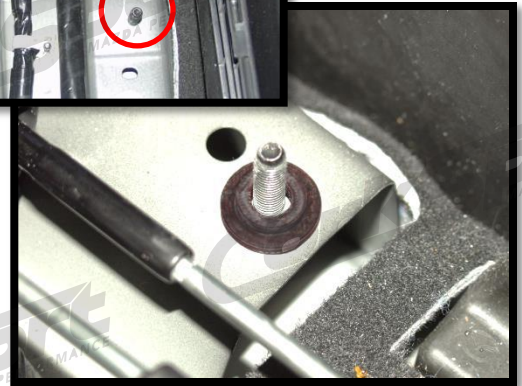
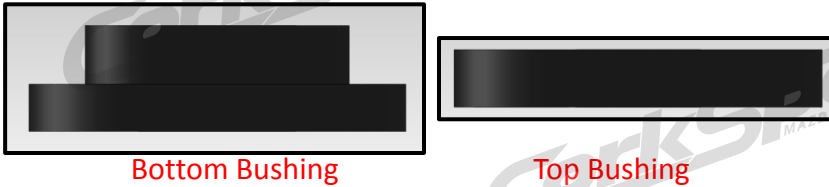


Figure 2b



- c) **Guide the shifter housing back into the center console.** Re-attach the shifter cables to the housing by pushing them into the slots (as shown in Figure 2c).



Figure 2c

- d) **Place the shifter housing back over the mounting studs.** Move the shifter housing in a circular back and forth pattern to seat the bushings up into the shifter housing.

- e) **Place the four (4) bushing kit washers over the mounting studs,** and fasten down the shifter housing with four (4) 12mm nuts (Figure 2d). Torque the 12mm nuts to 2-3ft-lbs.



Figure 2d

Detailed Instructions

2. Install the CorkSport Shifter Bushings (continued)

- f) **Re-attach the shifter cables to the shift lever.** Push the black cable end back onto the stud (red arrow) and fasten the other cable (red circle) to the lever with the 10mm nut (Figure 2e).
- g) **Reinstall the interior panels.** Follow the instructions in reverse order to reinstall the interior panels for your vehicle model.

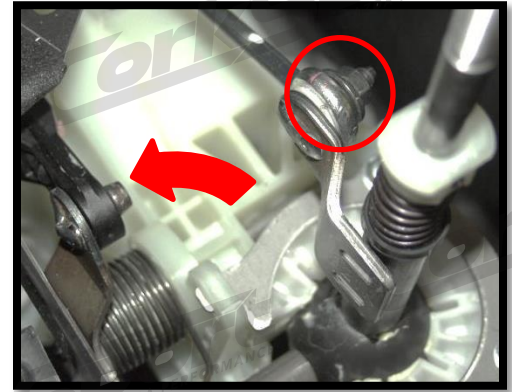


Figure 2e



This completes the installation of your CorkSport Shifter Bushings. Before starting the vehicle, push the clutch pedal and cycle the shift lever through all gears ensuring proper gear engagement.

What's Next:



[CORKSPORT 2014+ Mazda 3 Axle Back Exhaust](#)

Get added power and upgrade the look of your 2014+ Mazda 3 with the CorkSport Power Series Axle Back Exhaust. As a completely new vehicle the engineers at CorkSport were given free reign to design an axle back exhaust in the best way fitting to the graceful design of the Mazda 3. As always, the CorkSport Axle Back Exhaust was built using only the highest quality materials and design. This means the CorkSport Mazda 3 exhaust is constructed from T-304 stainless steel and is TIG welded with precision laser cut flanges and features full mandrel bending to eliminate any possible flow restrictions.

[CORKSPORT 2014+ Mazda 3 SkyActiv Power Series Short Ram Intake](#)



One of the easiest and most beneficial performance enhancements you can do for your vehicle, the CorkSport Power Series Short Ram Intake replaces your factory airbox with an open intake system allowing more air into the intake chamber. Engineered with exacting tolerances, the CorkSport SkyActiv Short Ram Intake includes our precision machined MAF housing made from billet aluminum, a durable dry flow air filter and custom reinforced silicone connector.

Need Help With Your Installation?

Call (360) 260-CORK