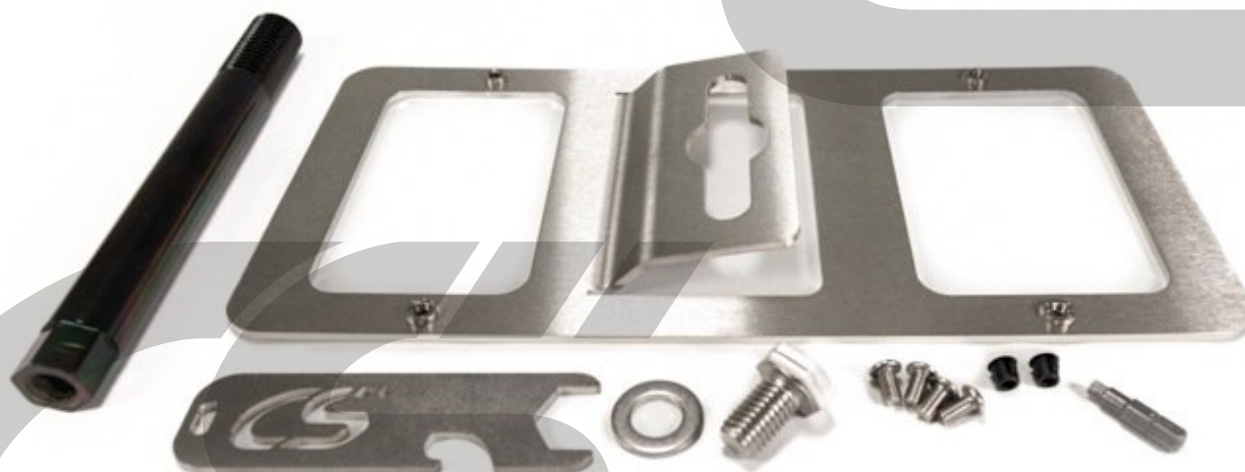


# CorkSport Performance

## CX30-8-010 License Plate Relocation Kit

Installation Instructions for the CorkSport Performance License Plate Relocation Kit for the 2019+ Mazda CX-30

Written By: Cody Dunton



## INTRODUCTION

In this installation guide we have provided step by step instructions to install the CorkSport Performance License Plate Relocation Kit.

### TOOLS:

- Medium Phillips Head Screwdriver (1)
- 10mm Socket-Deep (1)
- Small Flathead Screwdriver (1)
- 3/8" Ratchet (1)
- 17mm Socket - Deep (1)
- 1/4" Bit Driver (1)
- Wrench, 19mm (1)

### PARTS:

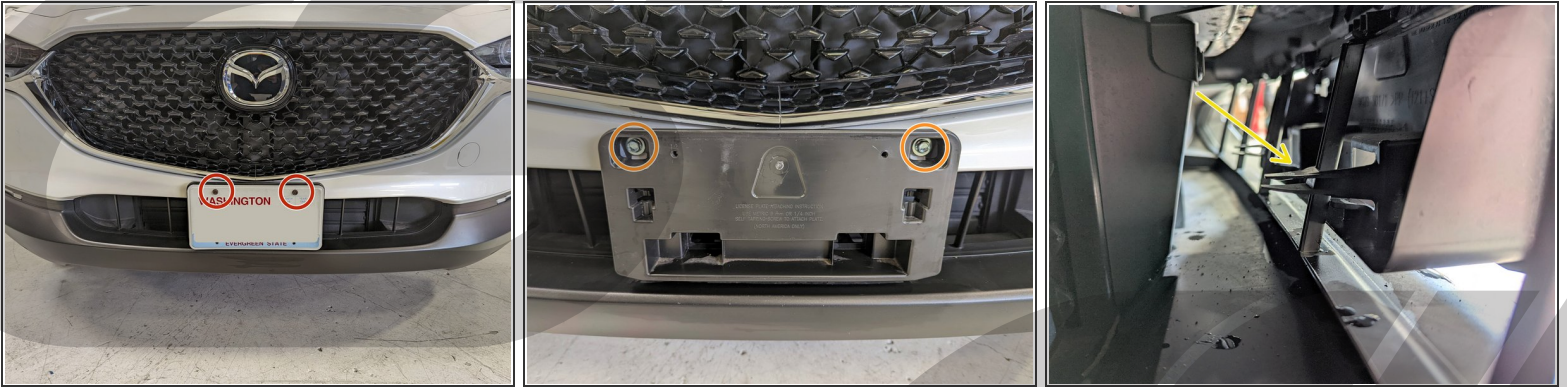
- CorkSport License Plate Bracket (1)
- CorkSport AXO Tow Hook Screw (1)
- CorkSport 19mm Wrench (1)
- M12x20mm Stainless Steel Hex Head Bolt (1)
- M12 Stainless Steel Washer (1)
- Security Hex Bit (1)
- Security Hex Screws (4)
- 1/4" Bumper Plugs (2)

## Step 1 — Getting Started



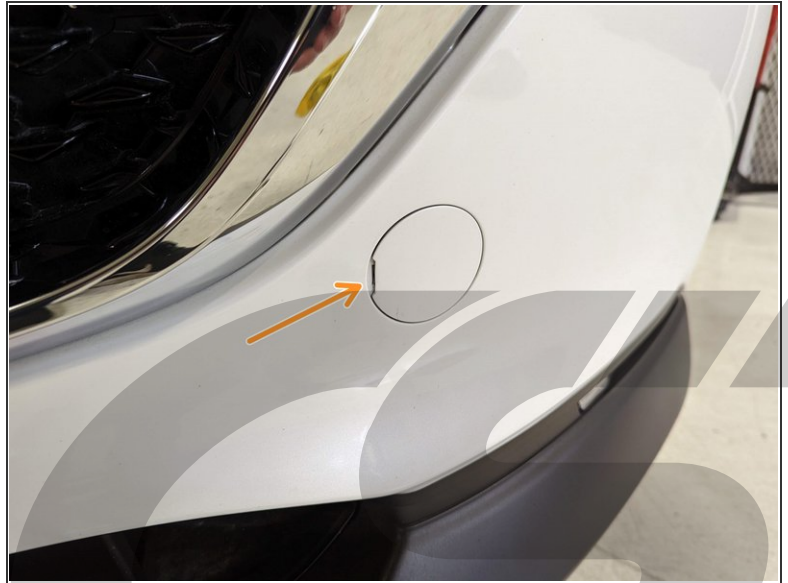
- First and foremost; **THANK YOU** for becoming a part of the CorkSport Family. We hope to bring you the highest level of Parts, Customer Service, & Support
- ⓘ How To Use These Instructions: The instruction format will relate colored marking in the image to the color dot in the text to the right of the image

## Step 2 — Remove the License Plate and OEM Bracket



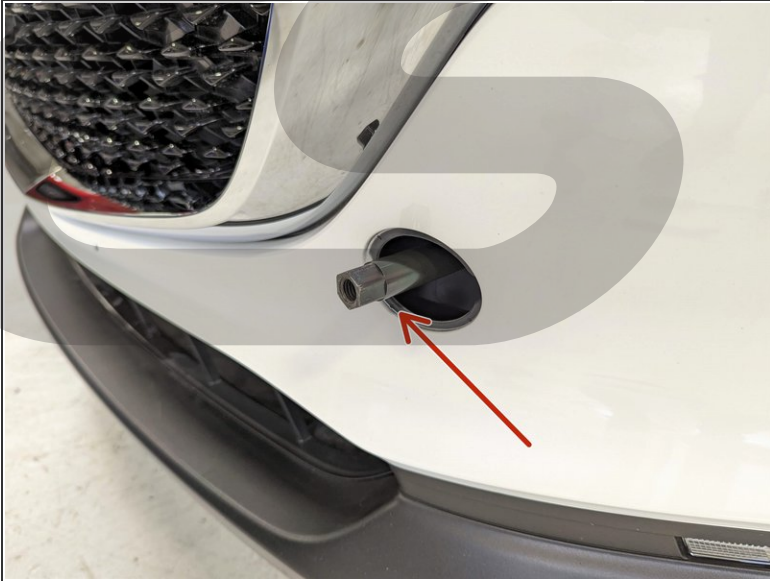
- Start by removing the License Plate using a Phillips screwdriver or 10mm socket and ratchet.
  - Using a 10mm socket and ratchet, remove the two bolts holding on the OEM License Plate Bracket.
  - Release the two hooks on the backside of the bracket by pulling towards the outside of the bracket.
  - **Optional:** If you would like to plug the holes that were used to secure the OEM bracket, use a 1/4" drill bit to enlarge the holes to fit the included plastic plugs.
- ⚠ Drilling the holes will require new hardware to be used if you want to return to using the OEM License Plate Bracket in the future**

### Step 3 — Locate and Remove the Tow Hook Cover



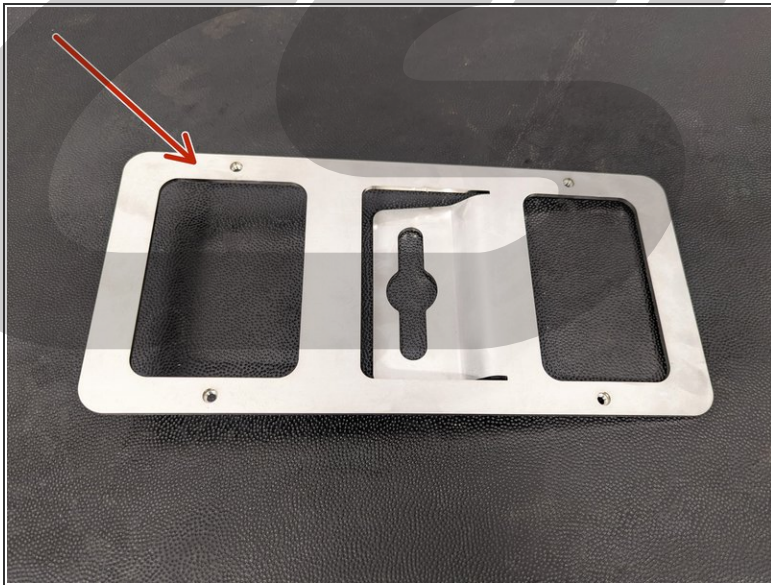
- Locate the Tow Hook Cover that is on the right side of the bumper.
- Using a flat head screwdriver, gently push the tab on the inside of the cover while prying outwards to remove

## Step 4 — Install the CorkSport Tow Hook Screw



- Install the Tow Hook Screw using a 17mm socket and ratchet to 45 ft-lbs.
- Now install the Stainless Steel 19mm Bolt and Washer into the Tow Hook Stud, leaving ~ 1/4" of room between the Washer and Tow Hook Screw.

## Step 5 — Install the License Plate onto the CorkSport Bracket



- Place the CorkSport License Plate Bracket on a flat surface as shown.
  - ⓘ The left side of the bracket should be off the surface.
- Place your License Plate on the bracket and install the 4 security hex screws using a 1/4" bit driver and the included security bit until they are snug.

## Step 6 — Place the License Plate on the Standoff



- Line up the large hole in the License Plate Bracket with the bolt and washer and slide over the head of the bolt.
- Let the License Plate Bracket sit on the bolt as shown.
- Tighten down the bolt using either the included wrench or another 19mm wrench until the License Plate Bracket is snug, but can still be rotated by hand.

## Step 7 — Level the License Plate



- Rotate the license plate bracket until it is level on the car and tighten down the 19mm bolt until it is tight.
- ⓘ If parked on a flat surface you can place a level on top of the license plate to properly align it.



## Step 8 — Installation Complete



- This completes your installation of the CorkSport Performance License Plate Relocation Kit!
- ⓘ Check the License Plate Bracket after driving to ensure that it remains tight.
- Contact us with any questions or concerns at [sales@corksport.com](mailto:sales@corksport.com) or (360) 260-2675.
- Please leave a review here: <https://corksport.com>
- Share your experience using #CorkSport on Instagram, Facebook, and Twitter.