

## CorkSport Mazda 2 Cold Air Duct

2011+ Mazda 2



**Thank you for purchasing the CorkSport Mazda 2 Cold Air Duct for CorkSport SRI.** By adding the CorkSport Mazda 2 Cold Air Duct to your vehicle, you will be able to reduce the intake of hot under hood air into your CorkSport Power Series Short Ram Intake. This will allow you to see the benefits of a cold air intake system without the pressure drops inherent to longer tube intakes. Our Cold Air Duct allows for additional exposure to outside air temperatures resulting in reduced heat soak and more power gained from your short ram intake. We hope you enjoy your new part. Please let us know your feedback by submitting a review today at <http://www.corksport.com/corksport-mazda-2-air-duct-for-corksport-sri.html>

### Pre-Installation Notes:



**Make sure your vehicle is completely cooled down** prior to starting installation. If you are going to work on your car within an hour or two of having driven it, use a fan to cool off the car.



**The CorkSport Mazda 2 Cold Air Duct was designed specifically for the CorkSport Mazda 2 SRI.** It is not compatible with other manufacturers short ram intakes.



**These instructions were written for reference only** and the use of a factory service manual is recommended. Please read these instructions thoroughly prior to starting installation



**These installation instructions were written using a 2011 Mazda 2.** Other year Mazda 2 models will be similar.

### Materials and Time:



#### General Info.

Part #: Mz2-6-120  
Time Est: 0.5 hours  
Wrench Rating: 1/5



#### Tooling List

10mm Socket  
10mm End Wrench  
3/8" Drive Ratchet




#### Parts List

One (1) CorkSport Cold Air Duct

Need Help With Your Installation?  
Call (360) 260-CORK

## Detailed Instructions

 These instructions were made using a 2011 Mazda 2.  
Other year models will be similar

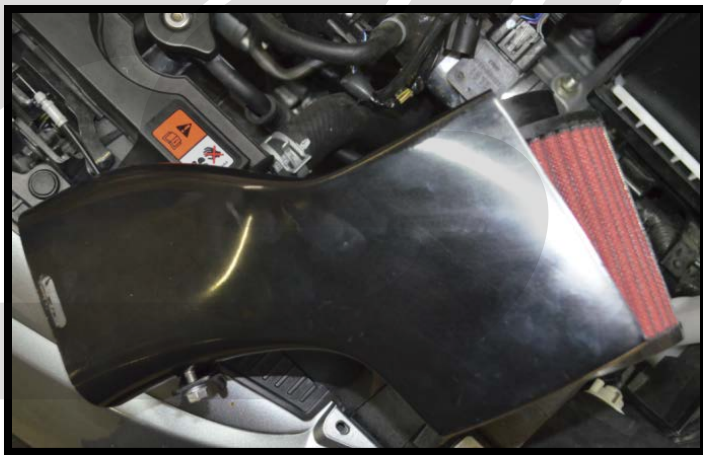
### 1. Installing the CorkSport Mazda 2 Cold Air Duct

- Remove the filter from the car by loosening the 10mm t-bolt clamp on the filter (shown with arrow in [Figure 1a](#)).
- Remove the 10mm bolt from the overflow tank (circled in [Figure 1a](#) and a close up in [Figure 1b](#)).



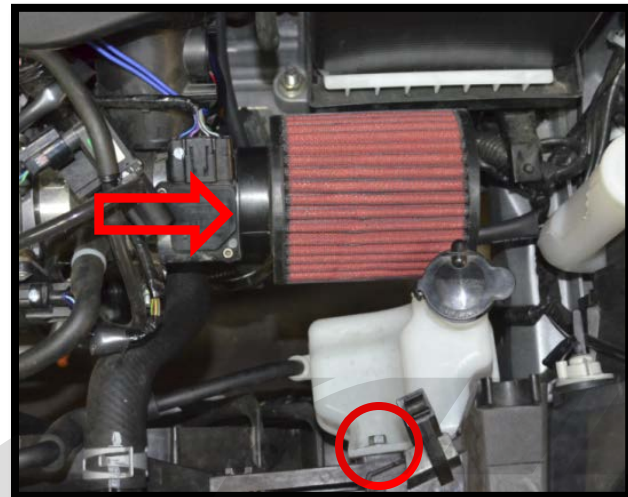
[Figure 1b](#)

- Your filter area should now look like [Figure 1c](#). Place the filter and clamp in the end of the CorkSport Cold Air Duct (shown in [Figure 1d](#)).



[Figure 1d](#)

- Rotate the CorkSport Cold Air Duct down (as shown in [Figure 1e](#)). Make sure to hold the filter so it doesn't fall out. Place the filter back on the MAF assembly.
- Tighten the 10mm t-bolt clamp that was removed in step 1a attaching the filter to the MAF housing.



[Figure 1a](#)



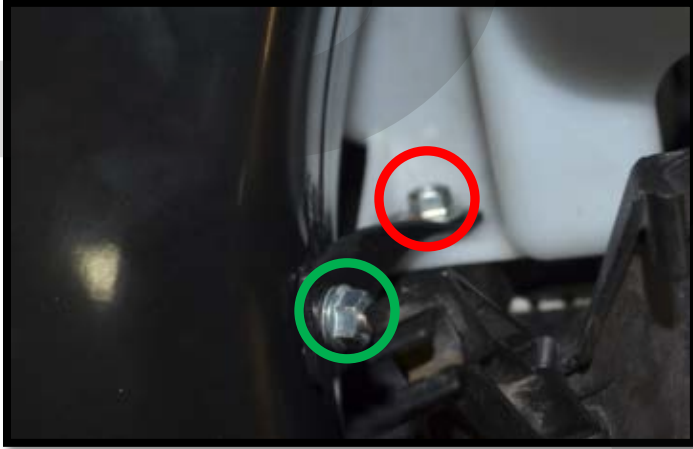
[Figure 1c](#)



[Figure 1e](#)

## 1. Installing the CorkSport Cold Air Duct Continued

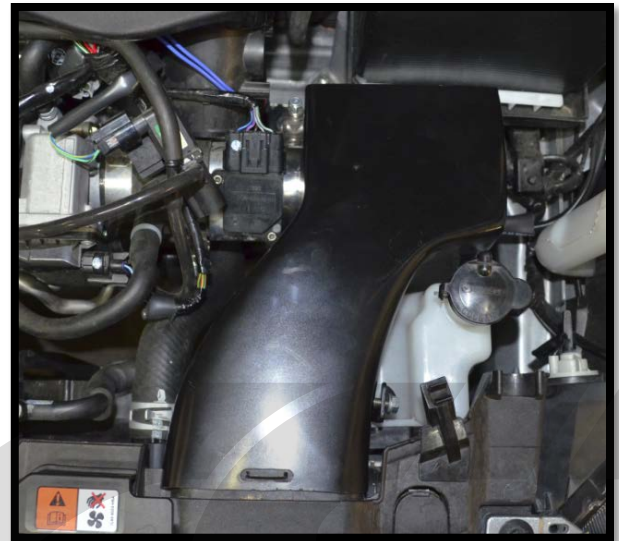
- f) Secure the Cold Air Duct into place as shown in **Figure 1f**.
- g) Bolt the Cold Air Duct bracket to the overflow tank by replacing the 10mm overflow bolt using a 10mm end wrench or small socket (circled in **red** in **Figure 1g**).



**Figure 1g**

- h) Tighten the bracket on the Cold Air Duct with a 10mm wrench (shown circled in **green** in **Figure 1g**).

**Make sure there is clearance in between the battery cable. The air box and the battery are stationary but you should try not to pinch the cable in between the box. Clearance can be tight if the box is not located correctly. You can also loosen the two 10mm nuts on the battery tie down and slide it further away if necessary.**



**Figure 1f**



**This completes the installation of your CorkSport Cold Air Duct. Start the motor and listen for rattles. If you hear any make sure the box is properly aligned and the bolts are tight.**