

## CorkSport Short Throw Shifter

2016+ Mazda Miata MX-5



**Thank you for purchasing the CorkSport Short throw shifter for the Miata/Mx5.** Every driving enthusiast knows there are 3 (hey maybe 4) parts of the car that they have an intimate relationship with. The steering wheel, seat, pedals, and of course the shifter. Here at CorkSport we set out to develop a short throw shifter with the driving enthusiast in mind. The CorkSport Short Shifter features a throw reduction of 14% and the ability to adjust the shifter pre-load so the shifting resistance can be tailored to your preference. We hope you enjoy your new CorkSport Short Throw Shifter and we value your feedback. Submit a review online today at: <http://corksport.com/2016-mazda-miata-short-shifter.html>

### Pre-Installation Notes:



**Allow vehicle to cool for atleast 1 hour before installation.** Contact with transmission fluid will occur during the installation.



**These instructions were written for reference only** and the use of a factory service manual is recommended. Please read these instructions thoroughly prior to starting installation



**How our instructions work:** To best cover all of our customers experience levels, we have included a table of contents/order of operations along with step-by-step instructions.



**These instructions were written using a 2016 Mazda Miata MX-5 Launch Edition 2.0L.** Other 2016+ Mazda Miata MX-5 2.0L will be similar.

### Materials and Time:



#### General Info.

**Part #:** NDM-6-963-10  
**Time Est:** 1.5 hours  
**Wrench Rating:** 3/5



#### Tooling List

3/8" Ratchet  
3/8" - 10mm Deep Socket  
3/8" - 12mm Deep Socket  
3/8" - 13mm Deep Socket  
#2 Phillips Screwdriver  
Medium Size Pry-Bar  
Black Silicone RTV  
Gasket Scraper or Razor Blade  
Brake Clean Spray  
Shop Towels



#### Parts List

See Front Page

## Order of Operations & Table of Contents



### Vehicle Disassembly

Section 1: Interior Disassembly

Section 2: OEM Shifter Removal

Pg. 2

Pg. 3



### CorkSport Products Installation

Section 3: CorkSport Spacer Plate Installation

Section 4: CorkSport Shifter Assembly Installation

Section 5: Interior Components Installation

Pg. 4

Pg. 5

Pg. 6

## Detailed Instructions

### 1. Interior Disassembly

- a) **Remove the shift knob and shift boot bezel.** Unscrew the shift knob then pull up at the root of the **red arrows in Figure 1a** to remove the shift boot bezel.



Figure 1a

- b) **Remove the two phillips screws holding the center console.** Shown with the red arrows in Figure 1b.
- c) **Remove the center console.** Pull up on the center console in the location of the blue arrow on both sides. The blue dots show locations of snap clip retaining the center console. Shown in Figure 1a & 1b.
- d) **Disconnect the wiring to the control knob.** Before you can completely remove the center console, you must disconnect the wiring harness to the control knob under the center console. Red circle in Figure 1b.



Figure 1b

## Detailed Instructions

### 2. OEM Shifter Removal

- a) Remove the upper shift boot. Remove the four 10mm nuts circled in red in Figure 2a.
- b) Remove the lower shift boot shown in Figure 2b.
- c) Remove the OEM shifter assembly. Remove the three 10mm bolts circled in red in Figure 2b.



Have a rag ready before removing the shifter assembly. This will have transmission fluid on it.

- d) Remove the OEM shifter base from the transmission. Locate the tab at the front of the shifter base. Using the pry bar, pry up on the tab against the transmission. Figure 2c – 2e.



Figure 2a

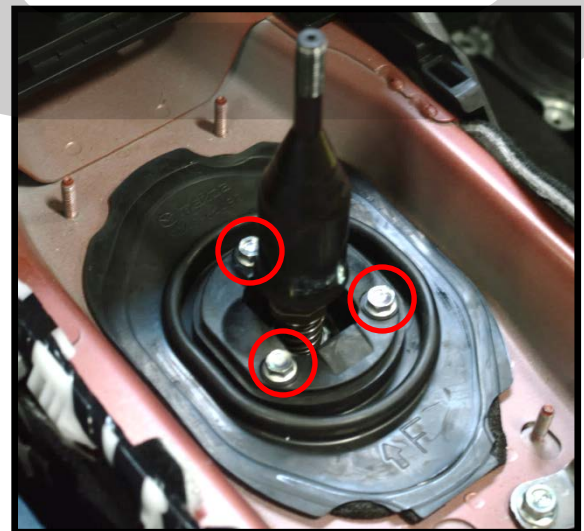


Figure 2b

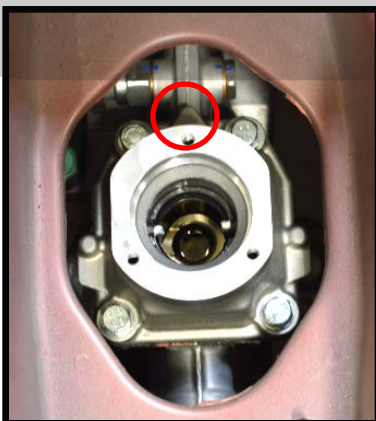


Figure 2c

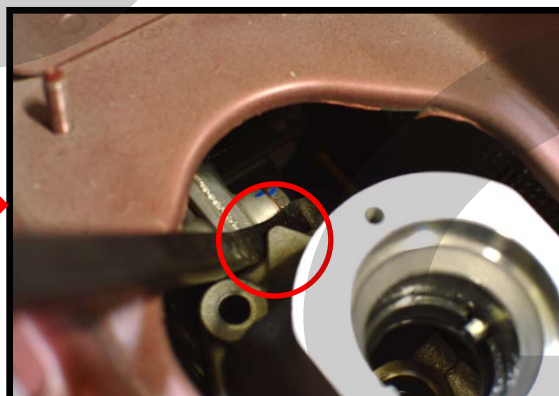


Figure 2d

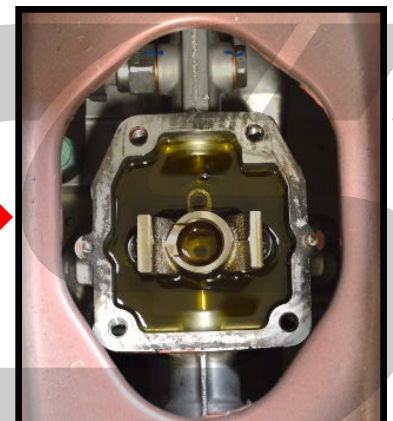
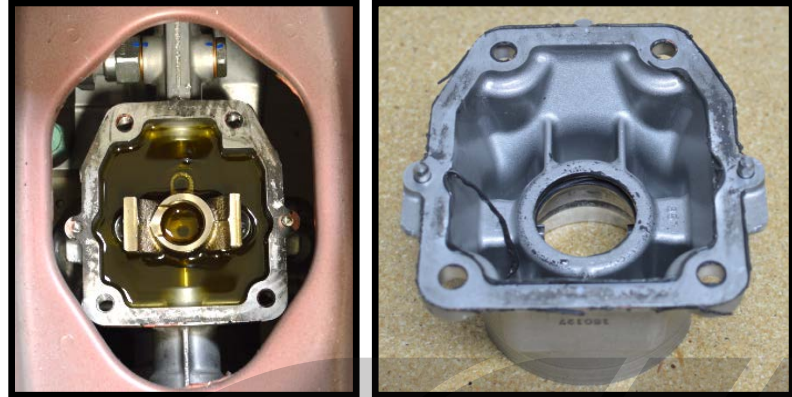


Figure 2e

## Detailed Instructions

### 3. CorkSport Spacer Plate Installation

- a) Clean the gasket mating surfaces on the transmission and shifter base. Using a gasket scraper or new razor blade, remove any excess gasket material. Next, use brake cleaner or other detergent to clean the surfaces of any oil residue. **Figure 3a.**
- b) Apply a ~1/8" bead of RTV silicone to the shifter base. Shown in **Figure 3b.**
- c) Install the CorkSport Spacer Plate. Shown in **Figure 3c.** This will require a small amount of pressure to press on.
- d) Apply another ~1/8" bead of RTV silicone to the shifter base. Shown in **Figure 3d.**
- e) Install the shifter base into the vehicle using the provided M8x1.25x35mm bolts and M8 flat washers. With a 13mm socket, tighten to opposing corner bolts hand tight then torque all four bolts to **12-16ft-lbf.**



**Figure 3a**



**Figure 3b**



**Figure 3d**



**Figure 3c**

## Detailed Instructions

### 4. CorkSport Shifter Assembly Installation



The instruction below show the assembly process outside of the vehicle for clarity. The following steps will be performed in the vehicle.



Figure 4a



Figure 4b



Figure 4c

- a) **Install 0.022" Shims.** Place 2 – 4 shims on the top of the shifter base, shown in Figure 4b. We recommend starting with 3 shims and adjusting from there. 2 shims will provide more movement resistance and 4 will provide less.
- b) **Install the assembled pivot/cup/rod.** Place into the shifter base and align the mounting holes, shown in Figure 4c. The orientation of the pivot/rod components does not matter for operation.
- c) **Install the reverse lockout plate.** Place the reverse lockout plate over the assembly onto the shifter base. Note the position of the flat side on the inner circle of the plate. Shown in Figure 4d.
- d) **Install hardware.** Install the 3 M6x1.0x16mm bolts provided with the kit. Torque to 7-10 ft-lbf.
- e) **Before installing the interior components,** drive around the block with your initial shim setup. Add or remove shims as desired.



Figure 4d

## Detailed Instructions

### 5. Interior Components Installation

- a) Install the lower shift boot.
- b) Install the upper shift boot. **Torque the 4 10mm nuts to 10-15 ft-lbf.**
- c) Install the center console. Reconnect the wiring for the control knob, then snap the center console into place. Install the 2 phillips screws.
- d) Install the shift boot bezel.
- e) Install the shift knob.



**This completes the installation of your CorkSport Short Throw Shifter! We appreciate your feedback, please leave a review at [Cork!port.com](http://Cork!port.com)!**

## What's Next:

### **CORKSPORT Adjustable Swaybars**

Track tested and racer approved, the CorkSport Front and Rear Swaybars are a great compliment to the daily driver and track rat. Get your body roll under control with the CorkSport 3-Way Adjustable Swaybars.



### **CORKSPORT Axle-Back Exhaust**

Liven up your ND with a sporty exhaust note that won't drive you crazy during the long drives. Featuring stainless steel 60mm pipe, high-flow resonator, and dual double wall tips.

### **CorkSport Lowering Springs**

Track tested and racer approved, the CorkSport Lowering Springs are a perfect match for your daily driven MX-5. The CorkSport Lowering Springs give the MX-5 an aggressive look without sacrificing functionality or ride quality.

