

Performance Installs

ATK-6-142-10 & -11 Boost Tube

Installation Instructions for the CorkSport Performance Boost Tube for the 2018+ Mazda 6 2.5L Turbo.

Written By: Barrett Strecker



INTRODUCTION

In this installation guide we have provided step by step instructions to setup, remove the OEM boost tube and install the CorkSport Performance Boost Tube.

Advisory:

- Working under the vehicle requires a safe and sturdy location for the vehicle to sit on jackstands.
- The engine bay will be hot after recent vehicle operation. Allow the vehicle to cool or use a fan to cool the engine bay before working on the vehicle.

TOOLS:

- [1/4" Ratchet](#) (1)
- [10mm Socket-Deep](#) (1)

PARTS:

- [ATK Boost Tube](#) (1)
- [CS T-Bolt Clamp - 70-78mm](#) (2)

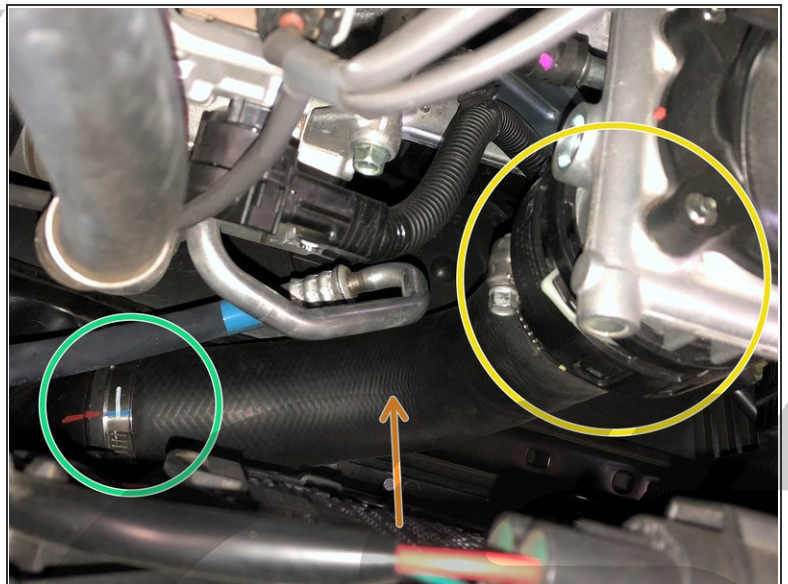
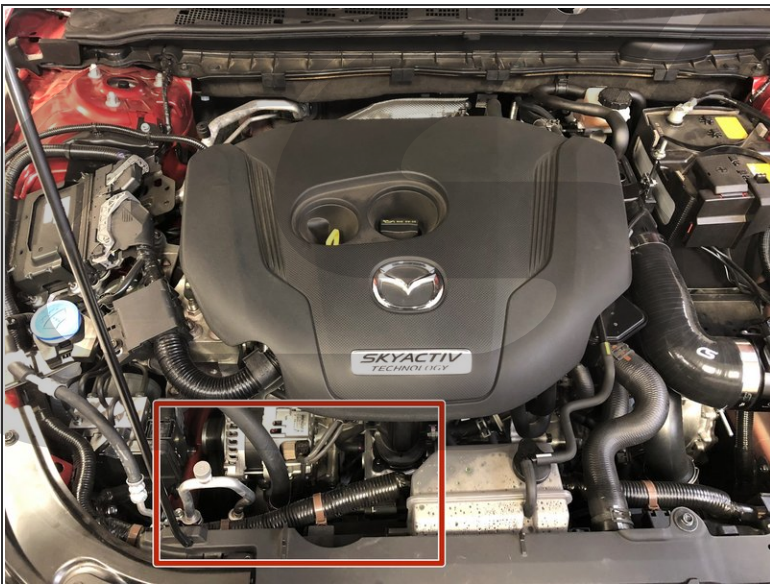
Step 1 — Getting Started



- First and foremost; **THANK YOU** for becoming a part of the CorkSport Family. We hope to bring you the highest level of Parts, Customer Service, & Support

ⓘ How To Use These Instructions: The instruction format will relate colored marking in the image to the color dot in the text to the right of the image

Step 2 — Locating the OEM Boost Tube



- Begin by locating the OEM Boost Tube. Look down the front of the engine on the passenger side.
- The boost tube is a large diameter textured rubber tube.
- The end circled in yellow is the throttle body side.
- The end circled in green is the intercooler side.

Step 3 — Loosening OEM Throttle Body Clamp



- Use the 10mm deep socket and 1/4" ratchet to loosen the OEM throttle body clamp.
- Slide the clamp down the rubber tube and out of the way.

Step 4 — Loosening the OEM Intercooler Clamp



- Use the 10mm deep socket and 1/4" ratchet to loosen the OEM intercooler clamp.
- Slide the clamp up the rubber tube and out of the way.

Step 5 — Removing OEM Boost Tube



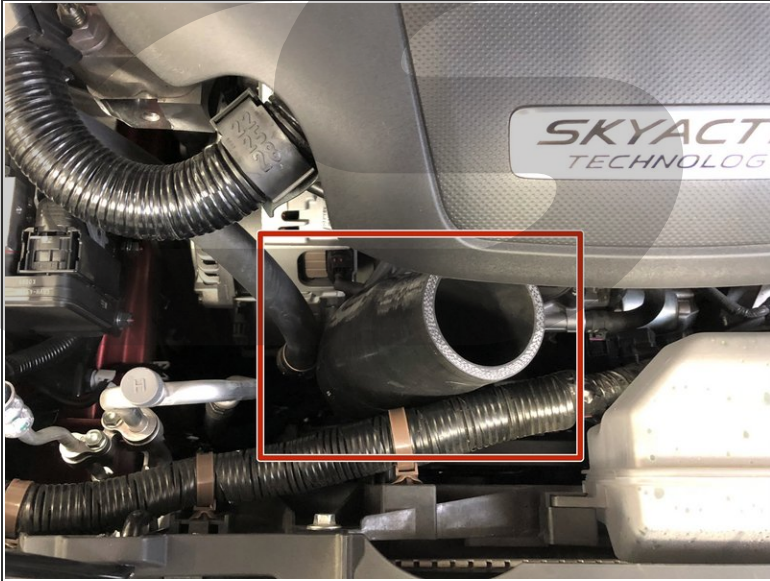
- Pull downward on the throttle body side to free the OEM boost tube from the throttle body.
- ⓘ Twisting the tube slightly can help free the tube from the throttle body.
- Pull outward on the intercooler side to free the OEM boost tube from the intercooler pipe.
- Once both sides are free, remove the OEM boost tube & clamps from the engine bay.

Step 6 — CorkSport Boost Tube Identification



- The CorkSport boost tube will only install one way. The OEM boost tube is shown next to the CorkSport boost tube for clarity.
- The straight end attaches to the throttle body.
- The end that curves downward attaches to the intercooler piping.
- When installed correctly, the "CS" logo will be visible when looking down the engine bay.
- For later reference, this clamp orientation works the best for easy tightening of the supplied clamps.

Step 7 — Inserting the CS Boost Tube in the Engine Bay

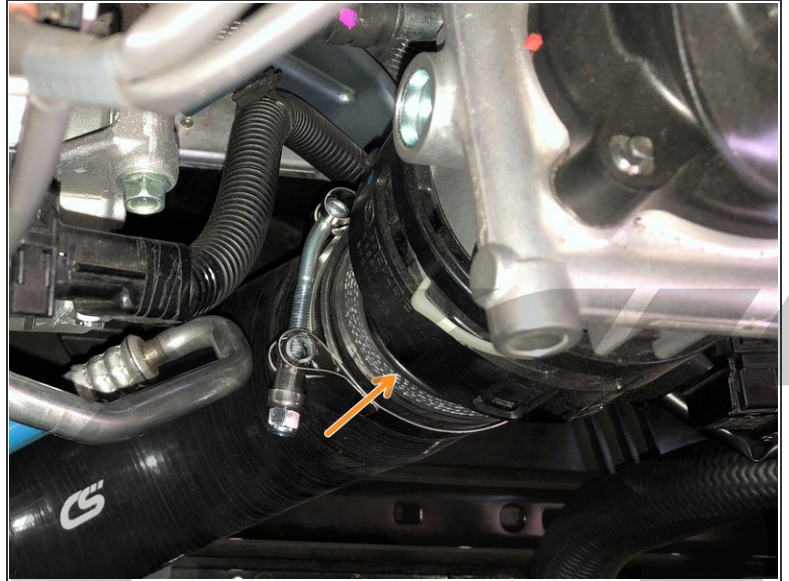


- Insert the throttle body end of the CS boost tube into the opening to the left of the throttle body.
 - ⓘ The boost tube will need to be squeezed through this opening. It is flexible, but ensure it does not get snagged on any wiring or sharp areas.
- Rotate the tube counter-clockwise as you squeeze it through the opening. It will need to rotate about 180°.
- Check that the tube is in the correct orientation ("CS" logo visible straight down).

Step 8 — Installing the CorkSport Boost Tube: Intercooler End

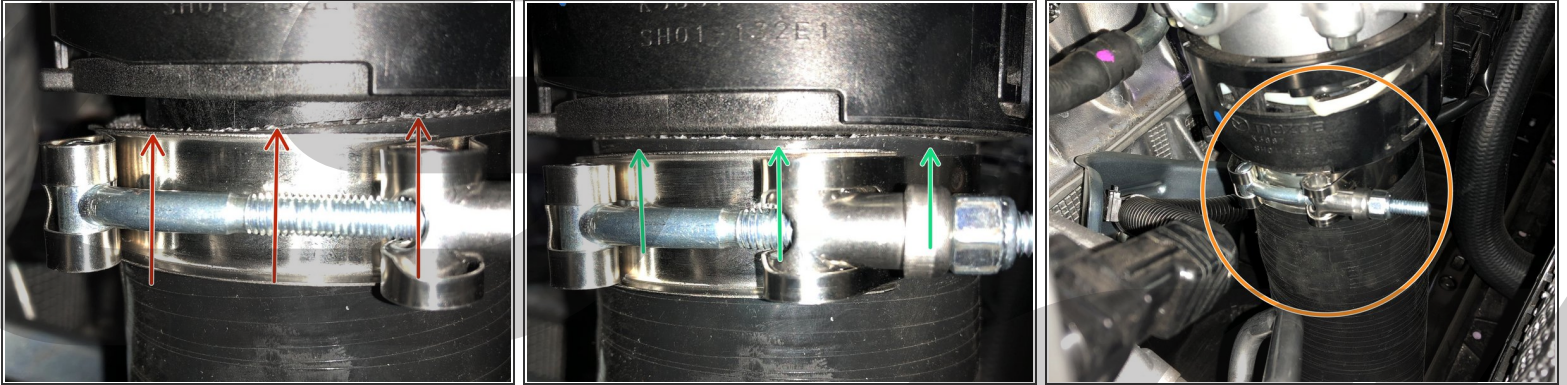
- Slide one of the supplied stainless steel t-bolt clamps over the intercooler end of the CorkSport boost tube.
 - ⓘ Reference Step 6 for easiest clamp orientation.
- Slide the intercooler end of the CorkSport boost tube over the end of the intercooler piping.
 - ⚠ Do not tighten the clamp yet.

Step 9 — Installing the CorkSport Boost Tube: TB End

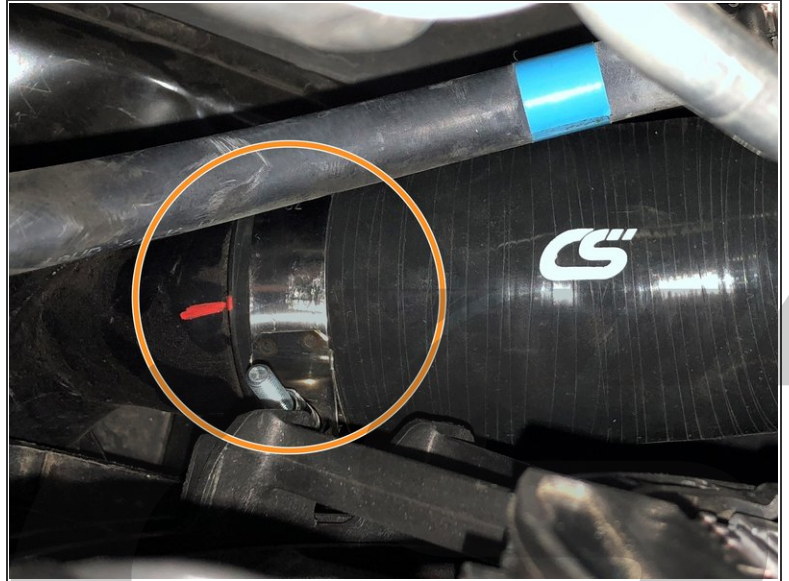
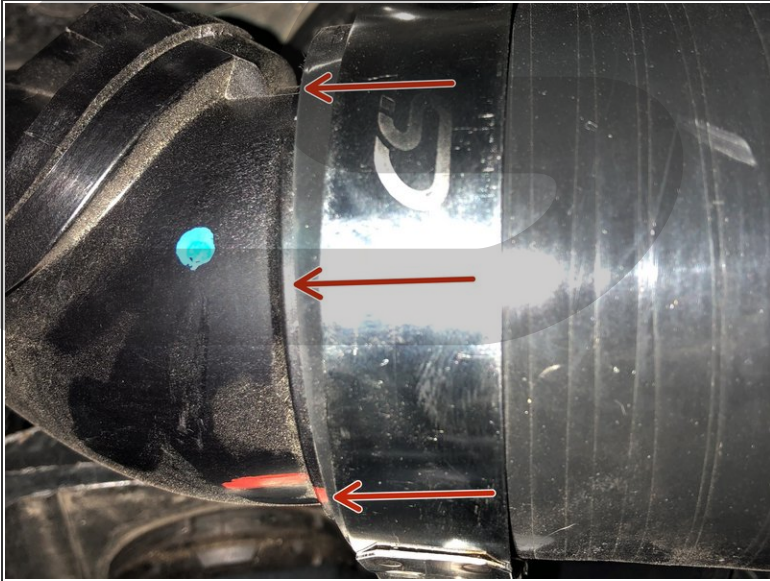


- Slide one of the supplied stainless steel t-bolt clamps over the throttle body end of the CorkSport boost tube.
 - ⓘ Reference Step 6 for easiest clamp orientation.
- Slide the throttle body end of the CorkSport boost tube over the end of the throttle body.
 - ⚠ Do not tighten the clamp yet.

Step 10 — Tightening the Supplied Clamps: Throttle Body End

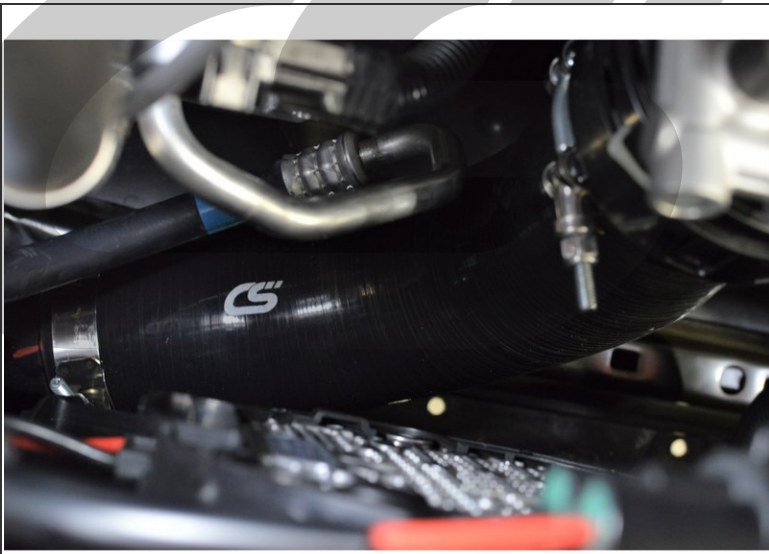


- Ensure the throttle body end of the CorkSport boost tube is fully seated on the throttle body.
 - The first image shows the throttle body end **not** fully seated.
 - The second image shows the throttle body end fully seated and clamp properly aligned.
- Using the 10mm deep socket and 1/4" ratchet, tighten the t-bolt clamp until snug.
- ⓘ When tightened properly, the silicone around the edges of the clamp will bulge slightly.

Step 11 — Tightening the Supplied Clamps: IC End

- Ensure the CorkSport boost tube is fully seated on the intercooler piping and the supplied clamp is properly aligned.
- Using the 10mm deep socket and 1/4" ratchet, tighten the t-bolt clamp until snug.
- ⓘ When tightened properly, the silicone around the edges of the clamp will bulge slightly.

Step 12 — Installation Complete



- This completes your installation of the CorkSport Performance Boost Tube!
- ⓘ Listen for any strange noises upon first start up. If any are present, you may have a boost leak and need to readjust the clamps and/or silicone.
- Contact us with any questions or concerns at sales@corksport.com or (360) 260-2675.
- Please leave a review here: <https://corksport.com/2018-mazda-6-2.5l-...>
- Share your experience using #CorkSport on Instagram, Facebook, and Twitter.

This document was last generated on 2019-01-15 10:29:57 AM.