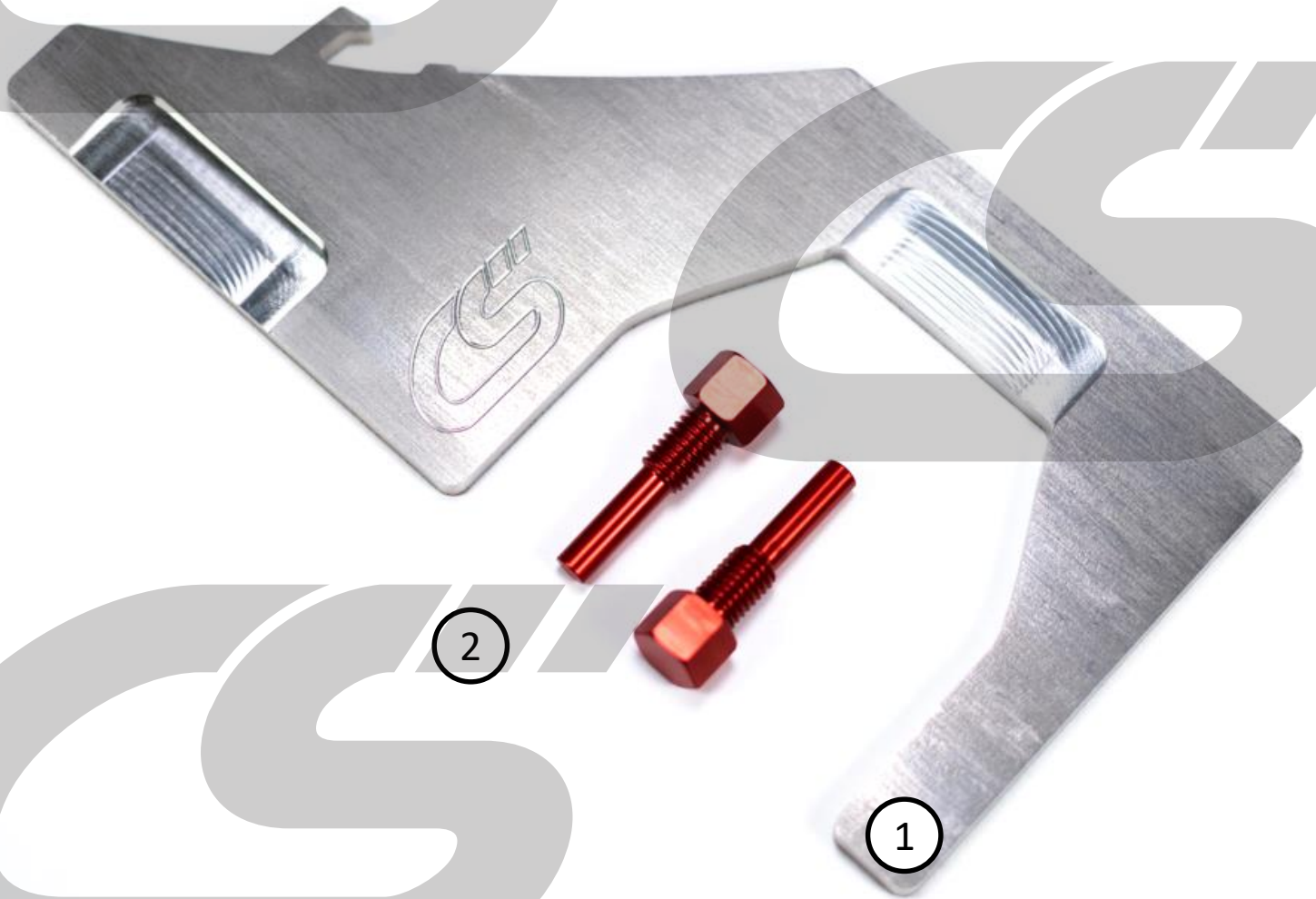


Part # GEN-6-508-10

CorkSport
MAZDA PERFORMANCE

CorkSport DISI MZR Timing Tool Kit

MZR DISI Engine found in Mazdaspeed 3 & 6, and CX-7



This package should contain:

- 1) One (1) CorkSport Camshaft Alignment Plate
- 2) Two (2) CorkSport Crankshaft Timing Pin

CorkSport DISI MZR Timing Tool Kit

MZR DISI Engine found in Mazdaspeed 3 & 6, and CX-7



Thank you for purchasing the CorkSport DISI MZR Timing Tool Kit. Constructed from 304 Stainless Steel and 6061-T6 Aluminum; the CorkSport Timing Tool Kit will accurately time your motor.

Please let us know what you think by submitting a review at:

<https://corksport.com/disi-mzr-timing-tool-kit-for-mazdaspeed.html>

Pre-Use Notes:



These instructions only show how to use the Camshaft Alignment Plate and Crankshaft Timing Pin . For full detailed instructions on how to set your engine timing, please refer to the Mazda service manual.



These out of car installation photos were produced using a DISI MZR on an engine stand. 2007-2013 Mazdaspeed 3, 2006-2007 Mazdaspeed 6, and CX-7 in engine bay will be similar.



Make sure your vehicle is completely cooled down prior to starting installation. If you are going to work on your car within an hour or two of having driven it, use a fan to cool off the car.

Materials and Time:



General Info.

Part #: GEN-6-508-10

Time Est: 15 min

Wrench Rating: 3/5



Tooling List

14mm Wrench

10mm Wrench

23mm Wrench

21mm Socket

1/2" or 3/8" Ratchet



Parts List

One (1) CorkSport Camshaft Alignment Plate

Two (2) Corksport Crankshaft Timing Pin

Need Help With Your Installation?
Call (360) 260-CORK

Part # GEN-6-508-10

Detailed Instructions



1. Using the CorkSport CrankShaft Timing Pin

- a) Make sure to remove all the spark plugs so that the motor can be easily turned over.
- b) Using the 21mm socket and ratchet, rotate the crankshaft clockwise until the crankshaft is close to TDC.
- c) Remove the plug bolt that is behind the crankshaft position sensor using a 10mm wrench. Shown in [Figure 1a](#).
- d) Install the CorkSport Crankshaft Timing Pin using a 14mm and tighten until snug. Shown in [Figure 1b](#).
- e) Using the 21mm socket and ratchet slowly rotate the crankshaft clockwise until it contacts the timing pin and stops. See [Figure 1c](#).



The camshaft lobes of cylinder 1 should point up and towards the middle. See [Figure 1d](#). If they do not they could be 180° out. To correct uninstall the timing pin and rotate the crankshaft 360° and then repeat steps C and D.

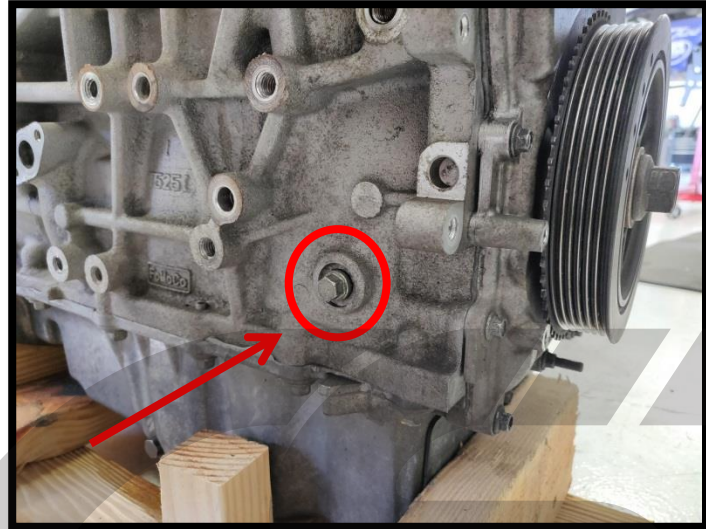


Figure 1a

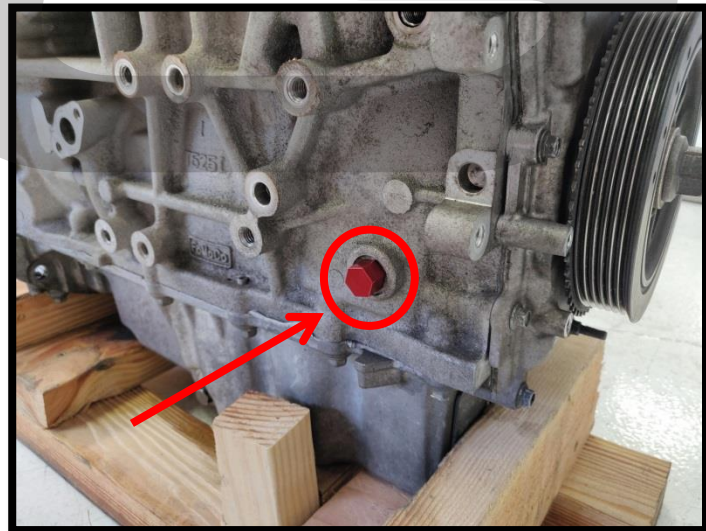


Figure 1b

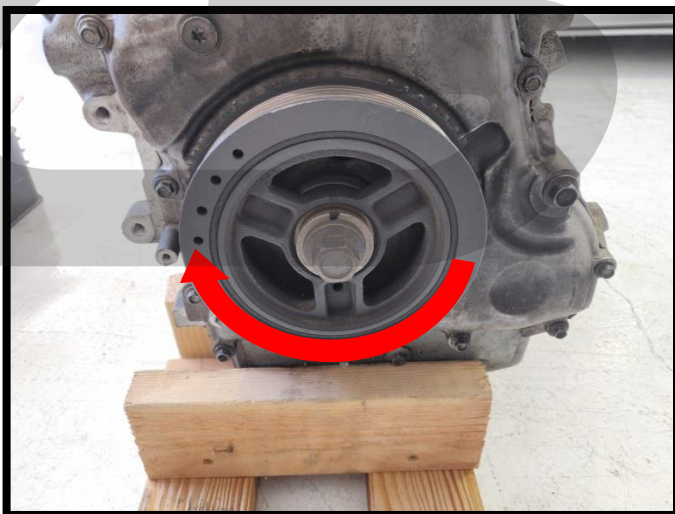


Figure 1c

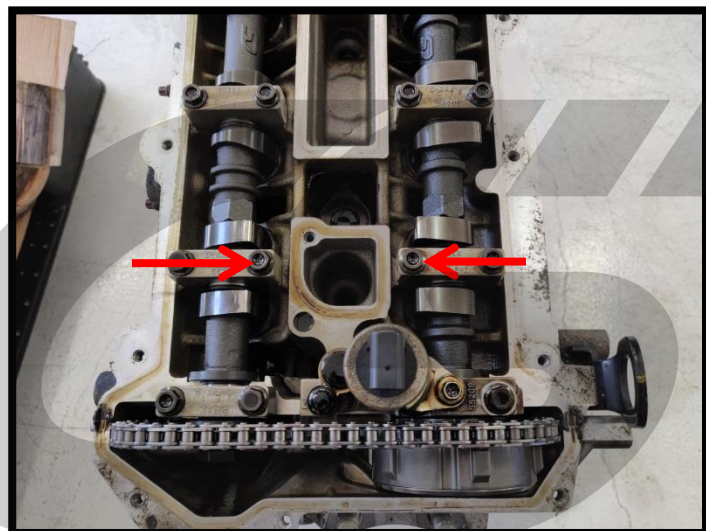


Figure 1d

Need Help With Your Installation?
Call (360) 260-CORK

Part # GEN-6-508-10

Detailed Instructions

2. Using the CorkSport Camshaft Alignment Plate

- a) Once the crank & camshafts are in the correct position, place an M6 bolt through the crankshaft pulley into the timing cover tightening until hand tight.



If the M6 bolt does not line up, the crankshaft pulley is not aligned properly. Refer to the Mazda service manual to correct errors.



When tightening cam sprockets or the crank pulley, **NEVER** use the timing pin, M6 bolt, or alignment plate to hold the crankshaft or camshafts in place.

- b) Place the camshaft alignment plate into the slots on the rear of each camshaft to verify they are correctly timed. Shown in [Figure 1a](#).



If the camshaft alignment plate does not fit, either one or both camshafts are out of time. Refer to the Mazda service manual to correct timing errors.

- c) Once the timing is verified and correct remove the camshaft alignment plate.
- d) Remove the M6 bolt from the crank pulley/timing cover.
- e) Remove the crankshaft timing pin using the 14mm wrench. See [Figure 1b](#).
- f) Reinstall the plug bolt and tighten to 13.3-16.2 ftlbs. Shown in [Figure 1c](#).

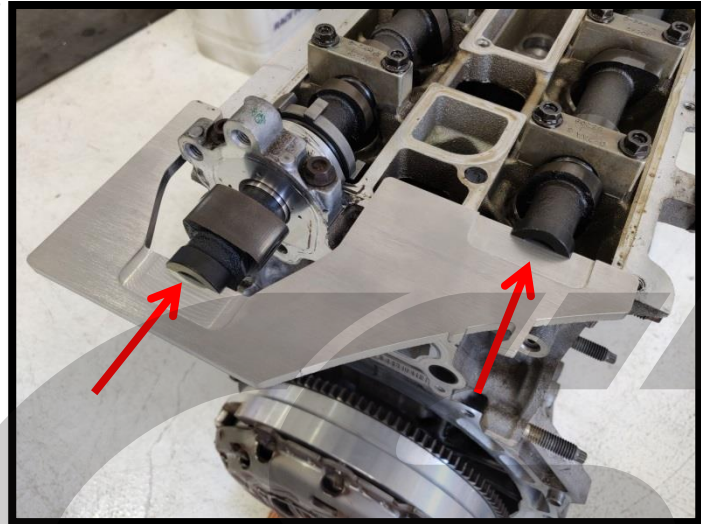


Figure 1a

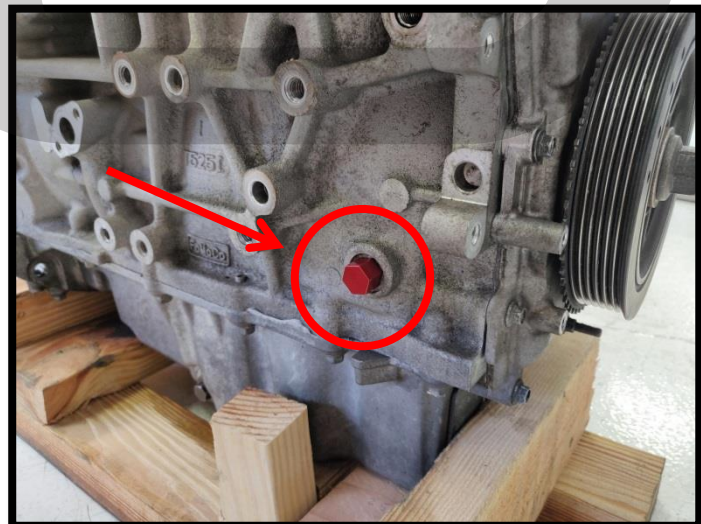


Figure 1b

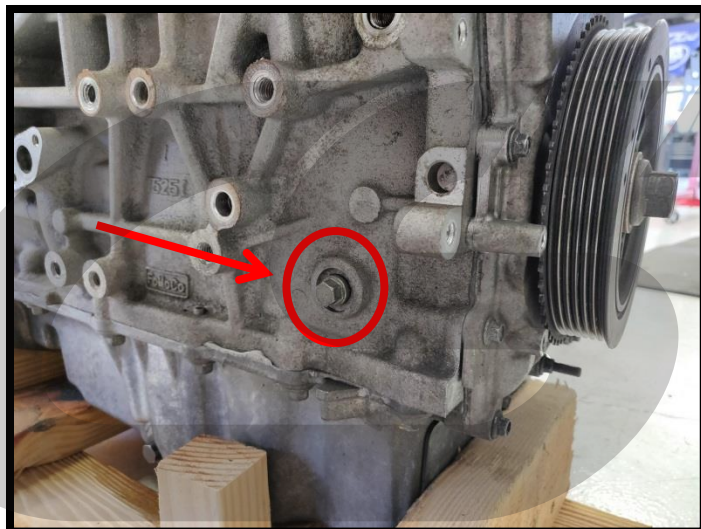


Figure 1c