

CorkSport Performance

AXE-8-601 Rear Wiper Delete

Installation Instructions for the CorkSport Performance Rear Wiper Delete for the 2007-2009
Mazdaspeed 3 Hatchback.

Written By: Cody Dunton



INTRODUCTION

In this installation guide we have provided step by step instructions to remove the OEM wiper and install the CorkSport Performance Rear Wiper Delete.

TOOLS:

- ¼" Ratchet (1)
- 10mm Socket-Short (1)
- 12mm Socket (1)
- 5mm Allen Key (1)
- Small Flathead Screwdriver (1)
- Blue Threadlocker (1)

PARTS:

- CorkSport AXE Outer Wiper Delete Plug (1)
- CorkSport AXE Inner Wiper Delete Plug (1)
- M8x12mm Stainless Steel Hex Drive Flat Head Screw (1)

Step 1 — Getting Started



- First and foremost; **THANK YOU** for becoming a part of the CorkSport Family. We hope to bring you the highest level of Parts, Customer Service, & Support
- ⓘ How To Use These Instructions: The instruction format will relate colored marking in the image to the color dot in the text to the right of the image

Step 2 — Removing the Rear Wiper Blade



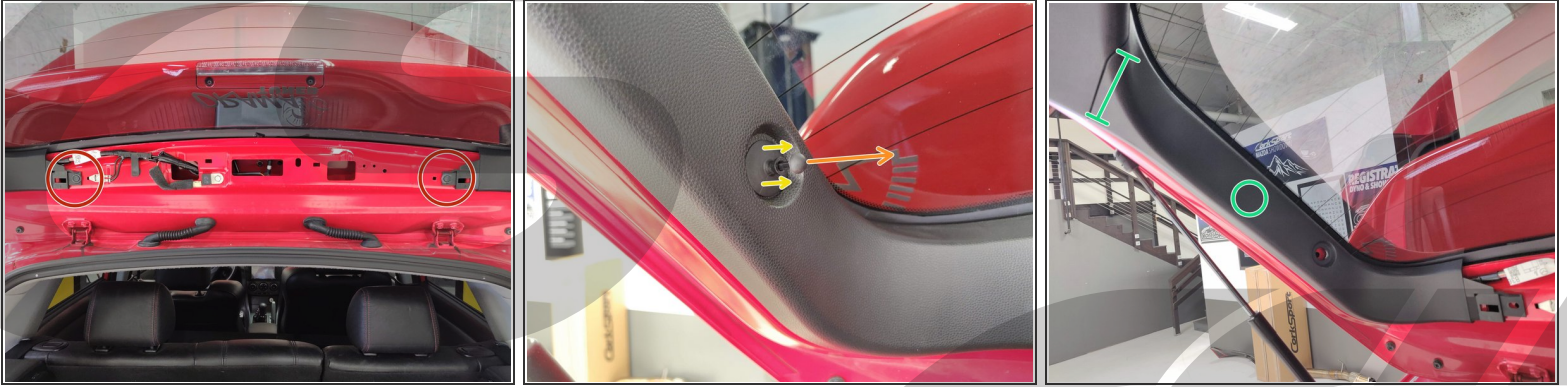
- Locate the rear wiper shaft cover. Using both hands, gently pull on both sides of the cover and lift up to remove.
- Using the 12mm socket and ratchet, remove the nut holding on the wiper.
- Now pull on the wiper around the wiper shaft to remove the wiper blade.

Step 3 — Removing the Storage Cover and Center Trim



- Locate the storage compartment cover hooks that are attached on both sides of the hatch and remove by sliding them towards the glass.
 - Slide the storage compartment outwards to remove it from the mounts.
 - Remove the center trim section by pulling towards you in the locations circled.
- ⓘ The mounting clips will make a loud pop when removed.
- ⓘ If a metal clip comes off of the trim piece when removing, it might have to be rebent to securely reinstall it back onto the trim piece.

Step 4 — Removing the Side Trim



- Remove the 2 plastic clips by using the small flathead screwdriver to gently pry up the center section and then pull out by hand.
 - Pull out the center of the clip that held on the storage compartment cover string.
 - After the center is pulled out, grab at the base of the clip and pull outwards to remove.
 - Next, remove the side trim by pulling on the edges of the trim, working your way from the bottom to the top.
- ⓘ The mounting clips will make a loud pop and their locations are circled for reference along with the connection between the two trim pieces at the top.
- ⓘ If a metal clip comes off of the trim piece when removing, it might have to be rebent to securely reinstall it back onto the trim piece.

Step 5 — Removing the Main Hatch Trim and Hatch Handle



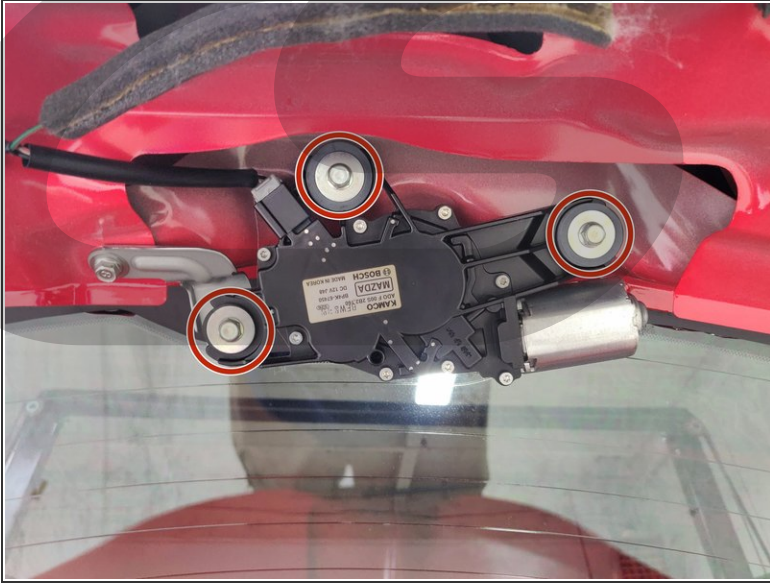
- Using the small flathead screwdriver again, remove the 2 plastic clips by gently prying up the center section and then pulling out by hand.
- Remove the hatch lid handle with the small flathead screwdriver by carefully working the screwdriver between the trim panel and the handle in the locations marked.
- ⓘ Go to the next picture to see what the locking tabs look like and their position.
- Carefully push down on the center of these tabs to release.

Step 6 — Removing the Main Hatch Trim



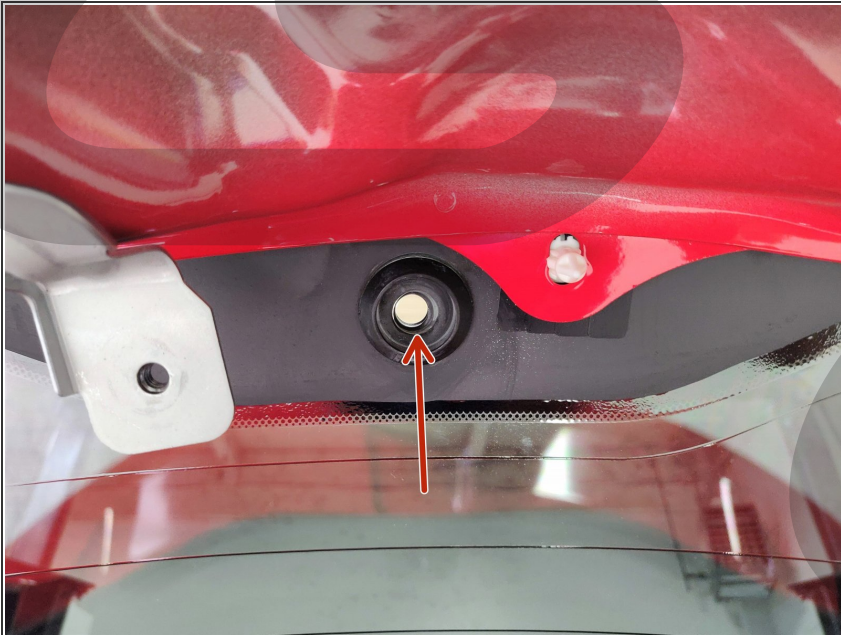
- Remove the covers on each side to help with the removal of the main hatch trim piece.
 - To remove the main trim panel, 8 hidden clips have to be released which are circled for reference.
 - Starting from one corner of the main trim panel use your hands to carefully remove the hidden clips by pulling down while working your way to the center. Then move to the opposite side and do the same process.
- ⓘ The clips will make a loud pop when they are released.

Step 7 — Removing the Rear Wiper Motor



- Using a 10mm socket and ratchet remove the 3 bolts that are holding the wiper motor on.
 ⚠ Make sure to hold the wiper motor when undoing the last bolt so that it does not fall.
- While holding the rear wiper motor, remove the electrical connector by pushing on the tab and pulling.

Step 8 — Removing the Rear Wiper Motor Grommet



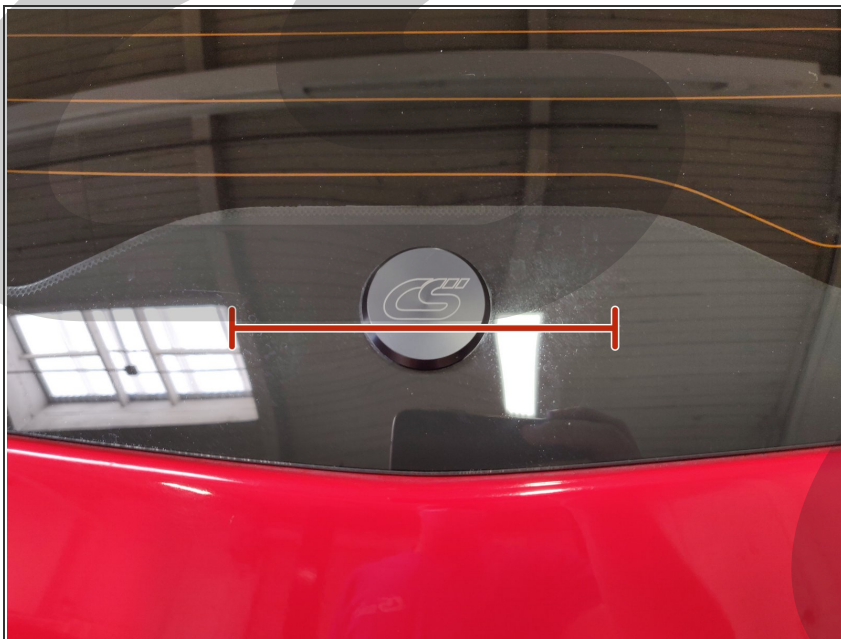
- Remove the rear wiper grommet by pushing from the inside of the car to the outside.
- ⓘ Clean any dirt or debris that is in or around the glass cutout.

Step 9 — Installing the CS Rear Wiper Delete Plugs



- Take the provided M8x12mm Stainless Steel Hex Drive Flat Head Screw and apply Blue Threadlocker.
- ⚠ Failure to apply Blue Threadlocker could result in the rear wiper delete to leak.
- Install the CorkSport Rear Wiper Delete Outer Plug into the glass cutout and center the CS Logo.
- Take the CorkSport Rear Wiper Delete Inner Plug and the screw and while holding the Outer Plug in place, lift up the hatch and start the screw. Tread in by hand until snug.

Step 10 — Checking Rear Wiper Delete Alignment



- Double check to make sure that the CS Logo is straight and using the 5mm Allen Key carefully tighten until the foam gasket compresses slightly.
- ⚠ Over tightening could result in the hatch glass cracking.

Step 11 — Reinstalling the Main Hatch Trim



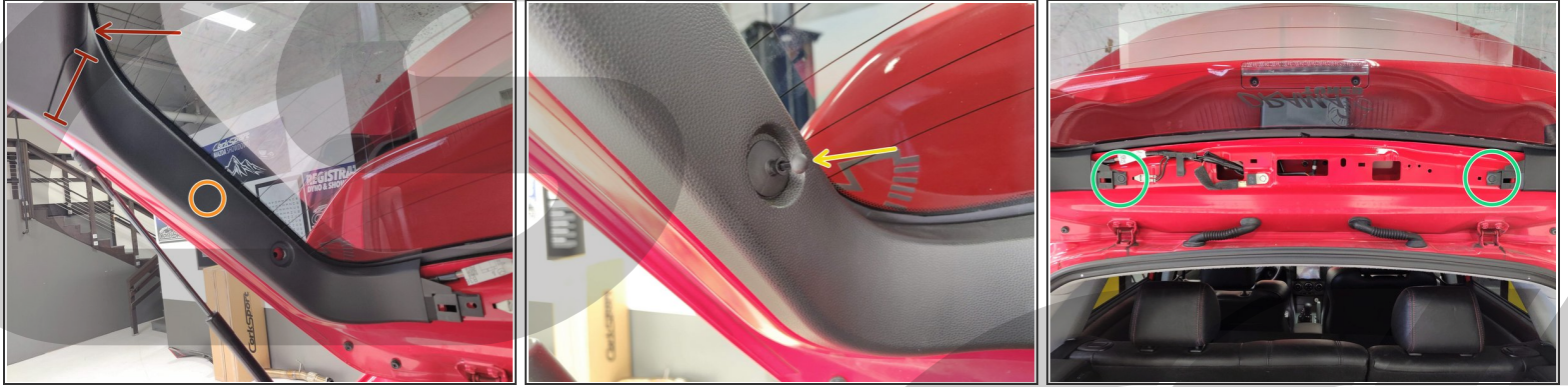
- Reinstall the main trim panel by aligning the mounting clips and pressing in the areas circled in the picture.
- ⓘ Look around the edge of the trim to make sure there are no gaps and that it is fully installed.
- Reinstall the covers on each side of the main trim panel.

Step 12 — Reinstalling the Main Hatch Trim and Hatch Handle



- Reinstall the hatch lid handle by making sure the two tabs are located on the top of the handle and inserting the bottom first and pushing on the top until it snaps into place.
- Reinstall the 2 plastic clips that are on each side of the main trim panel by placing the clip in the hole and then pushing down on the center pin.

Step 13 — Reinstalling the Side Trim



- Reattach the side trim pieces by aligning the top of the side trim to the main trim. Then gently push on the upper section making sure that there are no gaps between the trim panels.
- Line up the mounting location circled and push until it snaps in.
- Reinstall the clip that holds on the storage compartment string by pushing on the outside. Then lock it in by pushing on the center pin.
- Reinstall the 2 clips that are circled by using the same method that was used for the previous clips.

Step 14 — Reinstalling the Center Trim and Storage Cover



- Reinstall the center trim piece by lining up the locking clips and pressing on the locations circled to secure them.
- ⓘ Look around the edge of the trim to make sure there are no gaps and that it is fully installed.
- Locate the storage compartment cover and place it into the slots on the sides and press forward until they pop into place.
- Grab the storage compartment cover strings and push and slide them onto the pin located on each trim piece.

Step 15 — Installation Complete



- This completes your installation of the CorkSport Performance Rear Wiper Delete!
- ⓘ Check Rear Wiper Delete for leaks and that it remains snug.
- Contact us with any questions or concerns at sales@corksport.com or (360) 260-2675.
- Please leave a review here: <https://corksport.com/2007-2009-mazdaspe...>
- Share your experience using #CorkSport on Instagram, Facebook, and Twitter.