

CorkSport Mazdaspeed 3 Hood Struts

2007-2009 Mazdaspeed 3



Thank you for purchasing the CorkSport Hood Struts for the Mazdaspeed 3. The simple addition of these hood struts allow one handed operation of your hood while providing much better access to the engine bay by eliminating the stock hood prop. Please let us know your feedback by providing a review here:

<http://www.corksport.com/corksport-2007-2009-mazdaspeed-3-hood-strut-kit.html>

Pre-Installation Notes:



Make sure your vehicle is completely cooled down prior to starting installation. If you are going to work on your car within an hour or two of having driven it, use a fan to cool off the car.



How our instructions work: To best cover all of our customers experience levels, we have included a step-by-step instructions for customers that require additional detail.



These installation instructions were written using a 2009 Mazdaspeed 3.

Materials and Time:



General Info.

Part #: Axe-8-700
Time Est: 30 minutes
Wrench Rating: 2/5



Tooling List

10mm Wrench
12mm Wrench
13mm Wrench
3/8" Socket Wrench
10mm Socket
12mm Socket



Parts List

Two (2) Hood Struts
Two (2) Hood Strut Brackets
Two (2) Fender Strut Brackets
Four (4) 10mm Ball Studs
Four(4) 13mm Flange Nuts
Two (2) 10mm Bolts
Two (2) 10mm Nuts
Two (2) Washers

Need Help With Your Installation?
Call (360) 260-CORK

Detailed Instructions

 These installation instructions were written using a 2009 Mazdaspeed 3.

1. Install the CS Hood Strut Brackets

a) **Open the hood** and prop it up with the factory hood prop.

b) **Locate the drivers side fender/frame rail bracket** (red circle in Figure 1a).



Figure 1a

c) **Place the CorkSport drivers side fender strut bracket** into the vehicles fender/frame rail bracket (as shown in Figure 1b).



Drivers Side Fender Strut Bracket

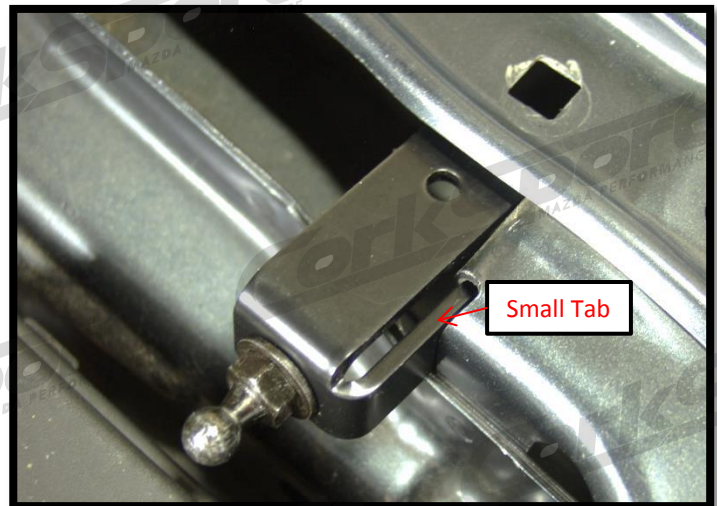



Figure 1b

 The smaller tab of the CorkSport bracket goes inside the slot in the factory fender bracket. Use a small hammer to tap the bracket into place and line the hole in the hood strut bracket to the square hole in the vehicle fender.

d) **Place one (1) of the supplied M6x1.0 bolts and washer down through the holes in the fender and hood strut bracket.** Fasten the bolt with one (1) of the supplied M6x1.0 nuts using a 10mm wrench and socket (Figure 1c).

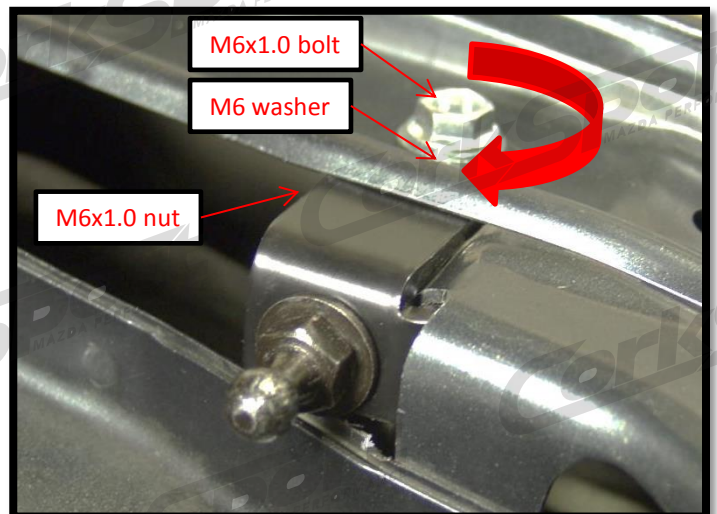



Figure 1c

 Take great care not to drop the nut down into the fender well.

1. Install the CS Hood Strut Brackets (continued)

- e) Use a 12mm socket wrench to remove the two (2) bolts fastening the hood to the hinge bracket (red circle in Figure 1d).



Be careful and don't drop the hood. Help from an assistant is recommended for this step.



Figure 1d

- f) Place the CorkSport hood strut bracket (as shown in Figure 1e) and replace the two (2) bolts. Tighten to 15 ft-lbs.



Drivers Side Hood Strut Bracket



Figure 1e

- g) Place the ball stud into the hole in the bracket. The ball end points toward the engine. Tighten it using one of the supplied nuts and 12mm and 13mm wrenches (red circle in Figure 1e).

- h) Repeat Steps 1b-1g for other side of car.

2. Install the CS Hood Struts

- a) Lift the hood off of the factory hood prop, and line strut up with the ball studs. Push the CorkSport hood strut onto the ball studs attached to the brackets. Not much force is needed here when done correctly. The smaller end of the strut attaches to the hood bracket (red arrow in Figure 2a), and the larger end of the strut attaches to the CS fender bracket (green arrow in Figure 2a).

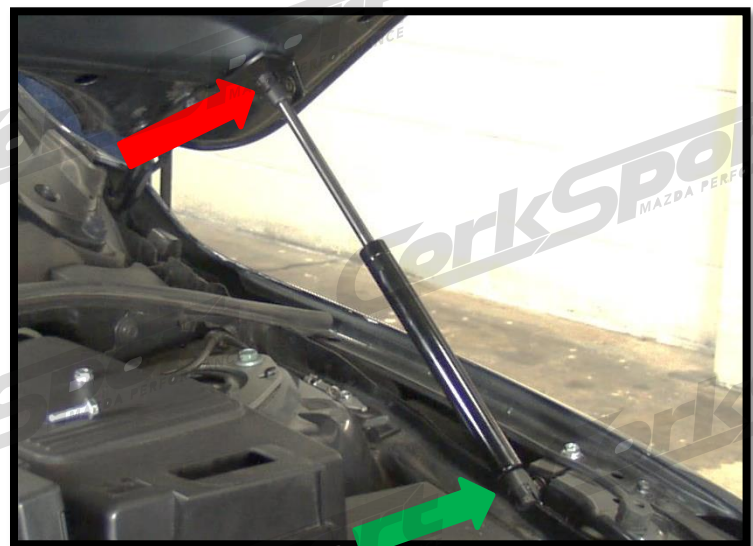


Figure 2a

2. Install the CS Hood Struts Continued...

b) Repeat the strut install process on the passenger's side of the car.



This completes the installation of your CorkSport Hood Struts. Open and close the hood to make sure that nothing binds. Once the hood is 50% open it will become light. Be very careful not to let the hood open too quickly.

What's Next:

[CORKSPORT LED Light Kit for the Mazda 3 2007-2009](#)



Enhance the look of your interior by adding custom LED interior lights. CorkSport's LED light kit replaces the incandescent bulbs for the dome light, map lights, rear hatch light (or trunk if you have a sedan), glove box light, and license plate lights. The lights simply plug in with no custom adapters or wiring required.

[CORKSPORT 2007-2009 Mazda 3/Mazdaspeed 3 License Plate Kit](#)

Give your 2007-2009 Mazdaspeed 3 a visual boost and improve airflow with the CorkSport License Plate Relocation Kit. By offsetting your factory license plate and moving it to the drivers side, the CorkSport license plate relocation kit will allow for better airflow and improve the overall look of your 2007-2009 Mazdaspeed 3.



[CORKSPORT 2004-2009 Mazda 3/Mazdaspeed 3 Mud Flap Set](#)



Give your Mazda a distinct rally look with CorkSport Mud Flaps. Made from the finest quality material, our mud flaps and are designed not to tear, peel, fade, rust or break and will provide protection for your Mazda or Mazdaspeed 3 against the elements, road debris, and high impact rocks that are kicked-up by your tires.

Need Help With Your Installation?

Call (360) 260-CORK