

CorkSport CX-9 Catback Exhaust

2016+ Mazda CX-9 AWD



Thank you for purchasing the CorkSport Exhaust for the 2016+ Mazda CX-9 AWD. Liven up your CX-9 with a great exhaust note that is subtle enough to drive day to day. The 80mm T-304 stainless steel piping and high flow resonators provide a boost to exhaust flow while looking good at the same time. Dual 100mm tips fit perfectly in the bumper cutouts to compliment the great looks of the Mazda CX-9. Please let us know what you think by submitting a review at: <https://corksport.com/2016-mazda-cx-9-awd-cat-back-exhaust.html>

Pre-Installation Notes:



Make sure your vehicle is completely cooled down prior to starting installation. If you are going to work on your car within an hour or two of having driven it, use a fan to cool off the car.



These instructions were written for reference only and the use of a factory service manual is recommended. Please read these instructions thoroughly prior to starting installation.



These installation instructions were written using a 2018 Mazda CX-9 AWD. Installation for earlier Mazda CX-9 AWD will be similar.

Materials and Time:



General Info.

Part #: CX9-6-100-12

Time Est: 2 hour

Wrench Rating: 2/5



Tooling List

10mm Socket

14mm Socket

17mm Socket

14mm End Wrench

17mm End Wrench

3/8" Drive Ratchet

6" Extension

Silicone Spray

Jack Stands

Floor Jack

Torque Wrench

Channel Lock Pliers

Drill

1/8" Drill Bit



Parts List

1. One (1) CorkSport Axleback Section for CX-9
2. One (1) CorkSport Connector Pipe for CX-9
3. One (1) CorkSport Midpipe Front Section for CX-9
4. One (1) CorkSport Midpipe Rear Section for CX-9
5. One (1) Exhaust and Hardware Kit
 - Six (6) M10x1.25x35mm Bolts
 - Six (6) M10x1.25 Nut
 - Six (6) M10 Lock Washers
 - Twelve (12) M10 Flat Washers
 - Four (4) 80mm Gasket

Need Help With Your Installation?

Call (360) 260-CORK

Order of Operations & Table of Contents

Follow the order of operations listed below for your purchased exhaust system.



OEM Catback Removal

Section 1: Support the car on floor Jack/Jackstands or Lift

Section 2: Removing the OEM Midpipe Assembly

Section 3: Removing the OEM Axleback Assembly

Pg. 2

Pg. 3-4

Pg. 5



CorkSport Catback Installation

Section 4: Installing the CorkSport Axleback

Section 5: Installing the CorkSport Midpipe Front Section

Section 6: Installing the CorkSport Midpipe Rear Section

Section 7: Reinstalling the OEM O2 Sensor

Section 8: Aligning the CorkSport Catback

Pg. 6

Pg. 7

Pg. 8

Pg. 9

Pg. 10

Detailed Instructions

1. Support the Car on Floor Jack/Jackstands or Lift

- a) Use a floor jack and jackstands to gain access to the underside of the vehicle. You will need to access the midpipe and axleback exhaust sections. Shown in **Figure 1a**.



Always refer to the floor jack and jackstand manufacturers instructions as well as the factory owners manual for your vehicle to determine jacking points and support points. Alternately, use an automotive lift to gain access to the underside of the vehicle. Redundant support mechanisms are recommended.

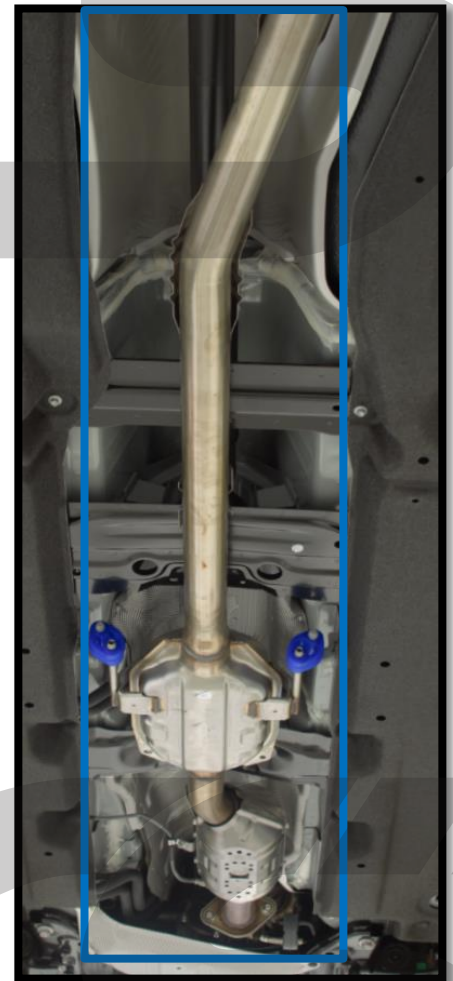
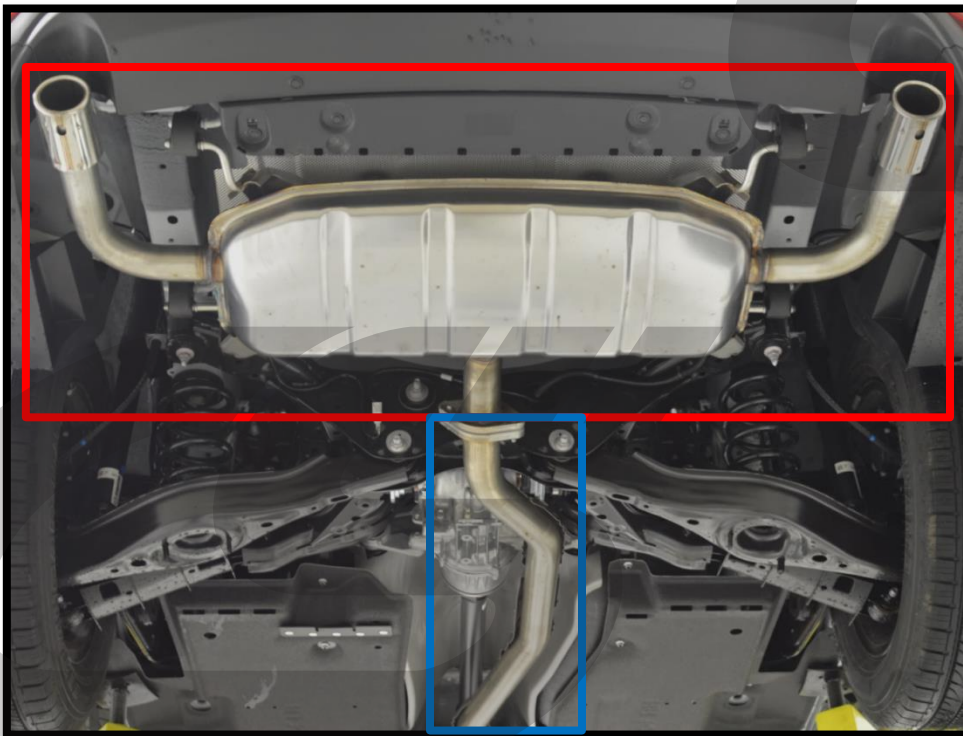


Figure 1a
Axleback Section shown in **red**, Midpipe section shown in **blue**

2. Remove the OEM Midpipe Assembly

- a) Using a O2 Sensor Socket or 22mm wrench, remove the O2 Sensor from the OEM midpipe. Circled in red in Figure 2a.

- b) Using a 10mm socket remove the nut and bracket holding the O2 sensor wiring to the midpipe (nut circled in blue in Figure 2a). Tuck the sensor and wiring up out of the way so it does not get damaged during the remaining install.

- c) Remove the two exhaust hangers from the blue rubber hangers located on either side of the muffler (shown with red arrows in Figure 2b). The midpipe will remain supported by the front and rear flanges.

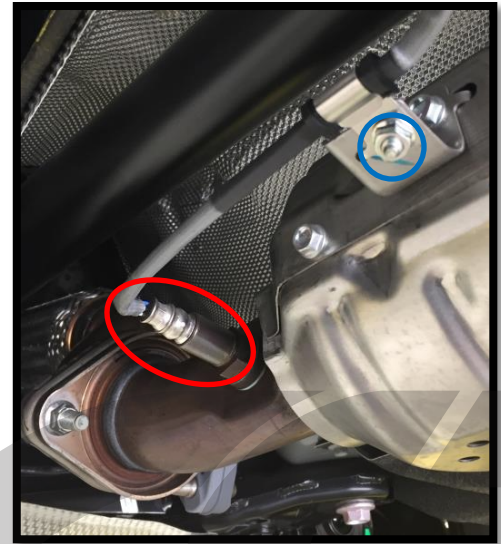


Figure 2a

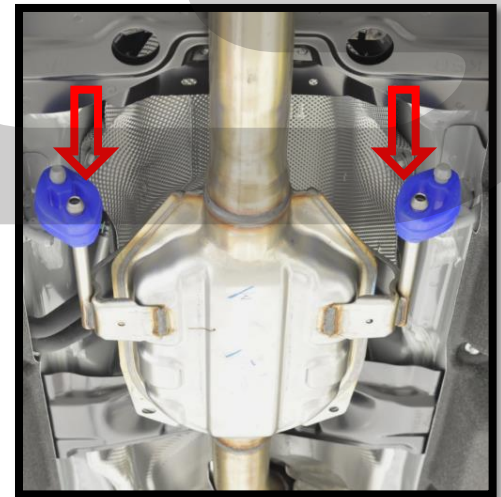


Figure 2b



Figure 2c

Silicone Spray and channel lock pliers can assist in the removal of the exhaust hangers from the rubber hangers. Spray the exhaust hanger with Silicone Spray then clamp the pliers on the rubber hanger on one side and the end of the exhaust hanger on the other (see Figure 2c). Be careful not to squeeze too hard as you can damage the rubber hangers.



2. Remove the OEM Midpipe Assembly (continued)

- d) Using a 14mm socket and extension if desired, remove the two nuts holding the factory axleback to the mid pipe (bolts circled in red in Figure 2d).

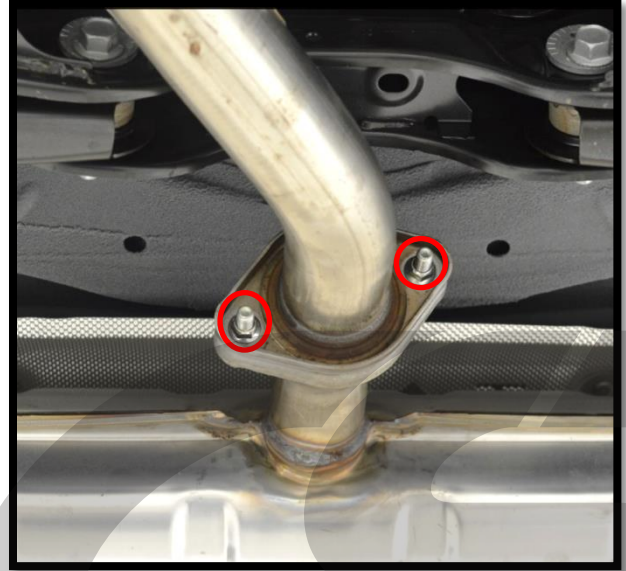


Figure 2d



Support the rear of the midpipe as you remove the nuts that connect it to the axleback to keep it from falling down. The easiest way is to get a friend to help you, use a floor jack, or use a bungee cord (shown in Figure 2e).

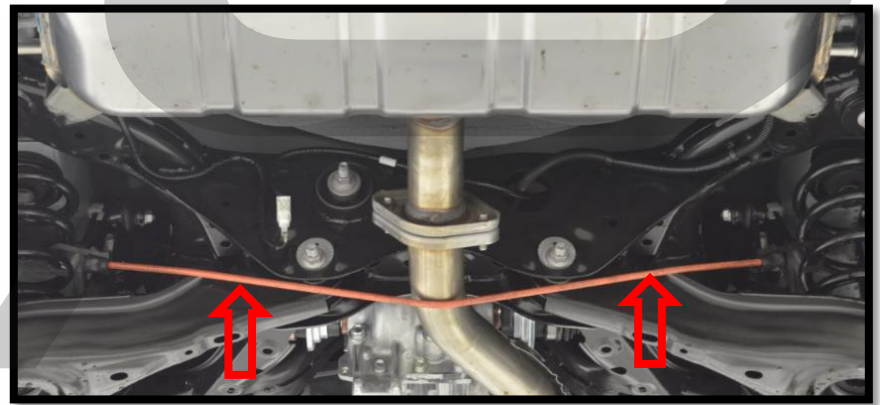


Figure 2e

- e) Using a 14mm socket and extension if desired, remove the two nuts holding the factory midpipe to the downpipe (bolts circled in red in Figure 2f). The entire midpipe assembly can now be removed from the vehicle.

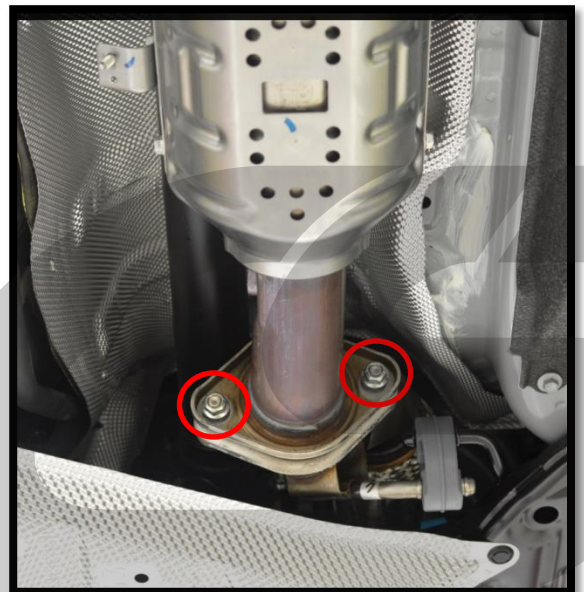


Figure 2f



The OE midpipe is one large piece and is quite heavy. Support one or more ends during removal or get a friend to help to ensure it does not fall and injure you.

3. Remove the OEM Axleback Assembly

- a) Remove the two rearmost exhaust hangers from the rubber hangers on either side of the axleback. Shown in red in Figure 3a.



Figure 3a



The removal of these two rear hangers will allow the axleback to pivot downwards as shown in Figure 3b.

- b) Remove the two remaining exhaust hangers from the rubber hangers. Shown in blue in Figure 3a. The underside will look like Figure 3c upon removal.



Figure 3b



Support the axleback as you remove it from the car to keep it from falling to the ground. The easiest way is to get a friend to help you or use a floor jack.



Figure 3c

4. Install the CorkSport Axleback

- a) **Install the CorkSport axle back exhaust.** Place the four exhaust hangers into four stock rubber hangers (red arrows in Figure 4a). Perform in reverse of removal, where two front hangers are installed first and then the axleback pivots to install the rear hangers into place.

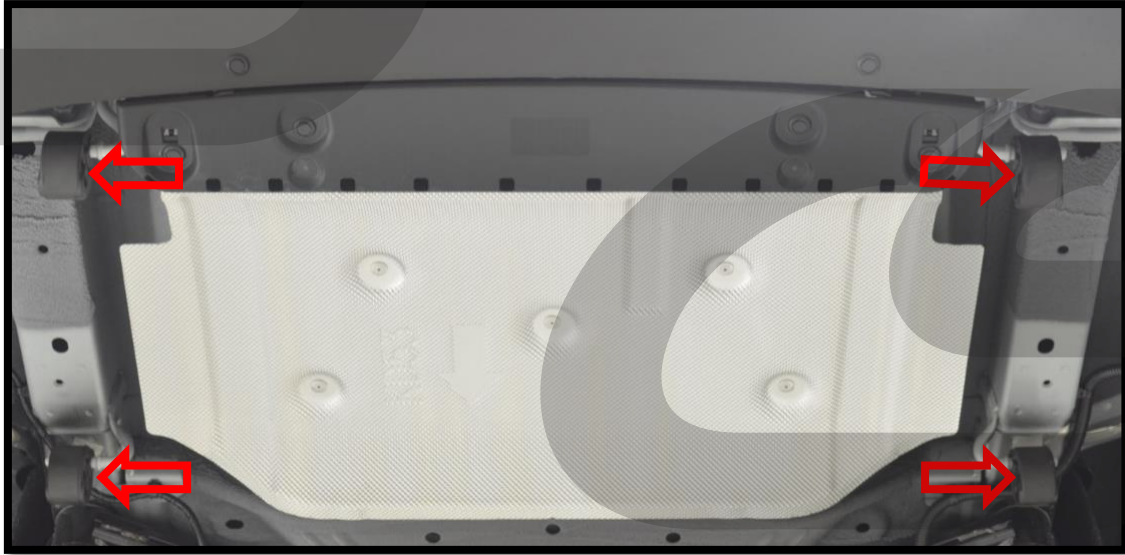


Figure 4a

- b) **Install the CorkSport Connector Pipe to the axleback section** using supplied hardware and gasket. Follow the orientation shown in Figure 4b.

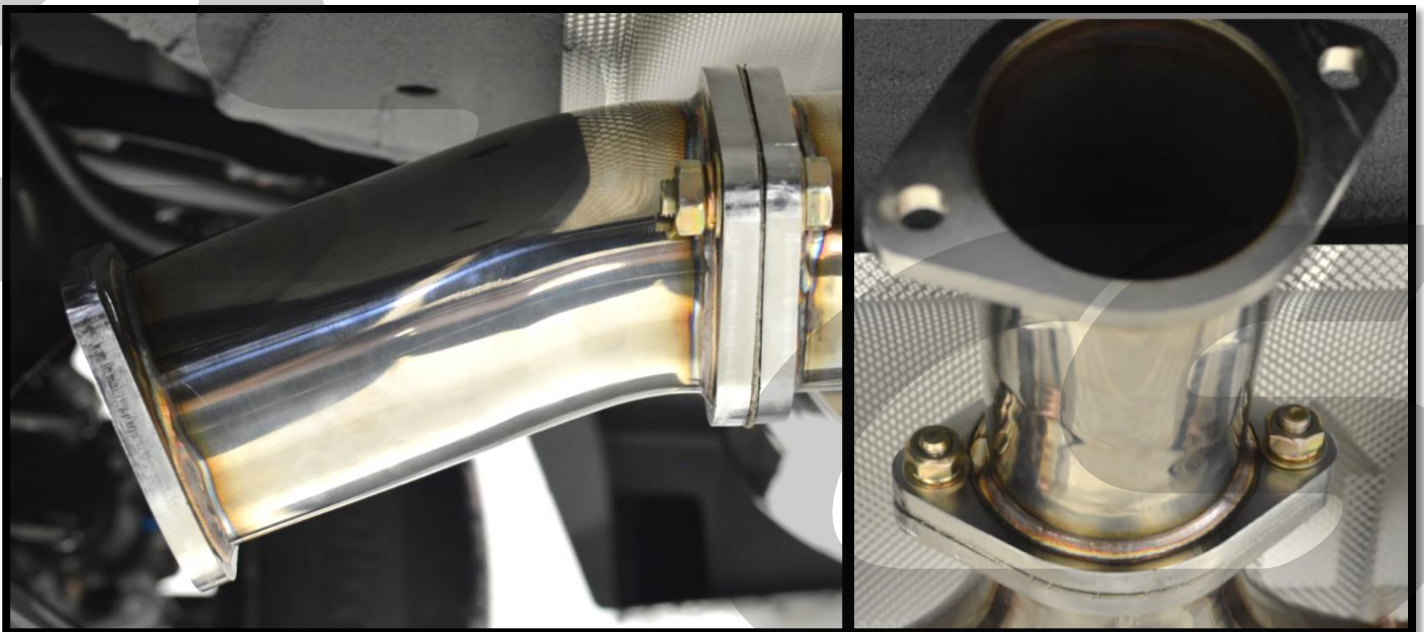


Figure 4a

5. Install the CorkSport Midpipe Front Section

- a) **Install the CorkSport Midpipe Front section onto two OE rubber hangers.** Place the two exhaust hangers into two stock blue rubber hangers (red arrows in Figure 5a). The rubber hangers should support the midpipe front section.

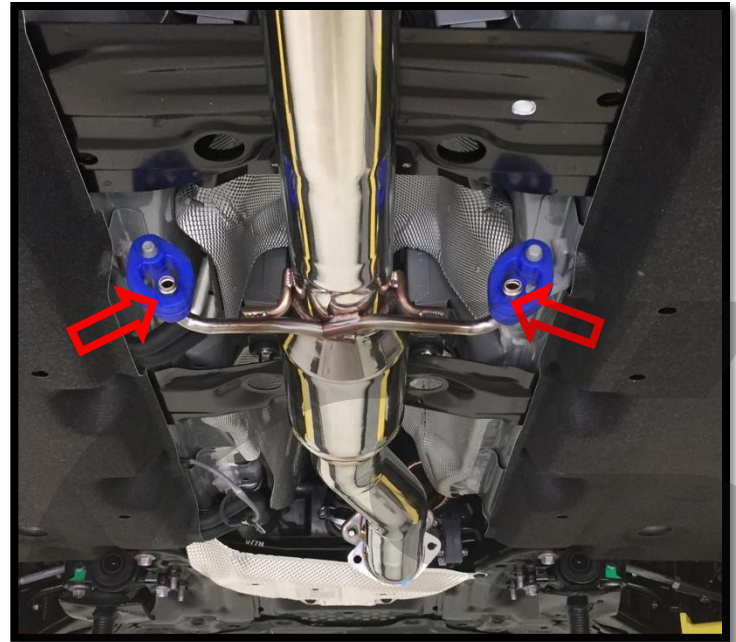


Figure 5a

- b) **Attach front flange of the CorkSport Midpipe Front Section to the OE downpipe.** Place a supplied 80mm gasket between the two flanges and hand tighten with two OE nuts. The nuts are shown in red and the gasket is shown in blue in Figure 5b.



Failure to use a supplied gasket can result in an exhaust leak and loud/strange noises coming from the exhaust.

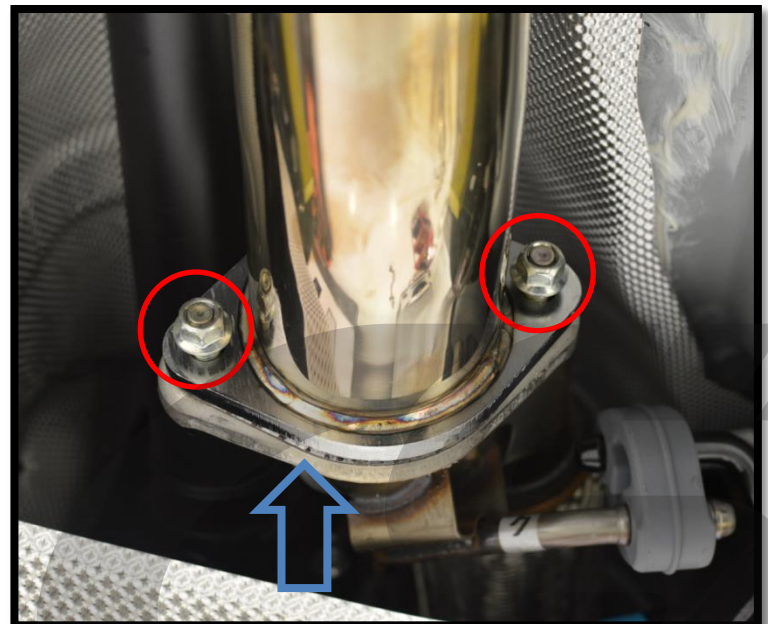


Figure 5b

6. Install the CorkSport Midpipe Rear Section

- a) Using supplied gasket and hardware, install the CorkSport Midpipe Rear Section onto the CS Midpipe Front Section. Place a supplied 80mm gasket between the two flanges and use supplied hardware to attach the two pipes. Only hand tighten for now. (Shown in [Figure 6a](#)). Proper hardware arrangement shown in [Figure 6b](#).

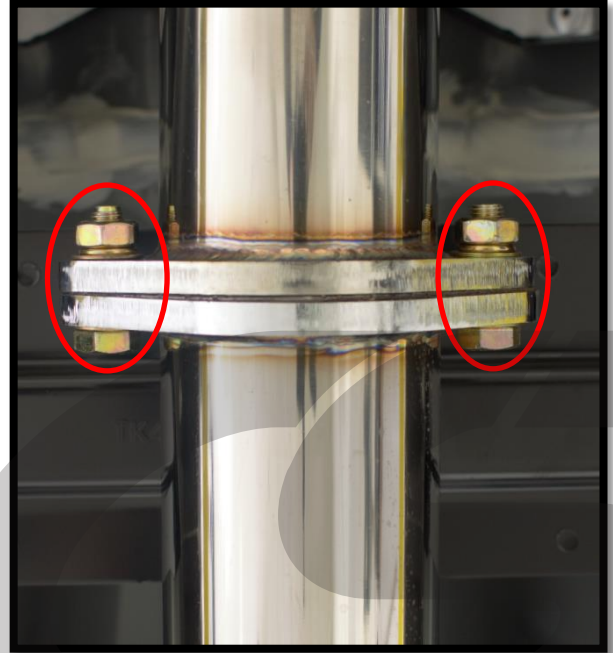


Figure 6a



Supporting the rear of the CS Midpipe Rear Section will make install easier and ensure it does not drag on the ground. The easiest way is to get a friend to help you, use a floor jack, or use a bungee cord like shown in [Figure 2e](#).

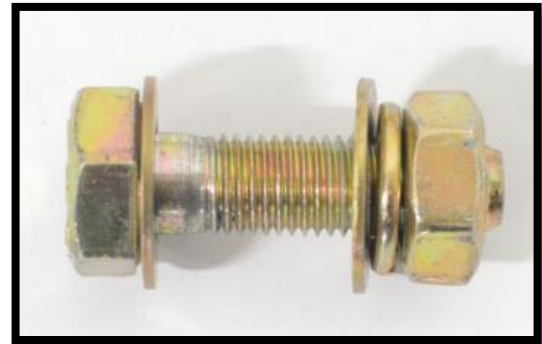


Figure 6b

- b) Attach rear flange of the CorkSport Midpipe Rear Section to the CS axleback. Place a supplied 80mm gasket between the two flanges and use supplied hardware to attach the two pipes. Only hand tighten for now. (Shown in [Figure 6c](#)).

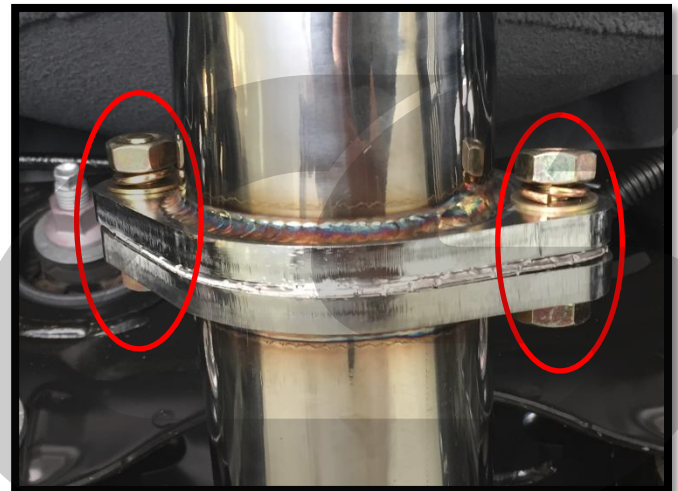


Figure 6c

7. Reinstall the OEM O2 Sensor

- a) Using a O2 Sensor Socket or 22mm wrench, reinstall the O2 Sensor into the bung on the CS midpipe (Shown in **Figure 7a**). Torque the O2 sensor to **28-32 ft-lbs**



Figure 7a

- b) Drill or punch a 1/8" hole in the corner of the OEM heat shield. This hole serves as an anchor point for the bracket on the O2 sensor wiring. (See **Figure 7b** for location after bracket is attached)

- c) Attach OEM O2 Sensor Wiring bracket to heat shield using supplied zip tie. **Figure 7b** shows the bracket attached to the heat shield. This step prevents the O2 sensor from hanging down and potentially dragging or catching something.

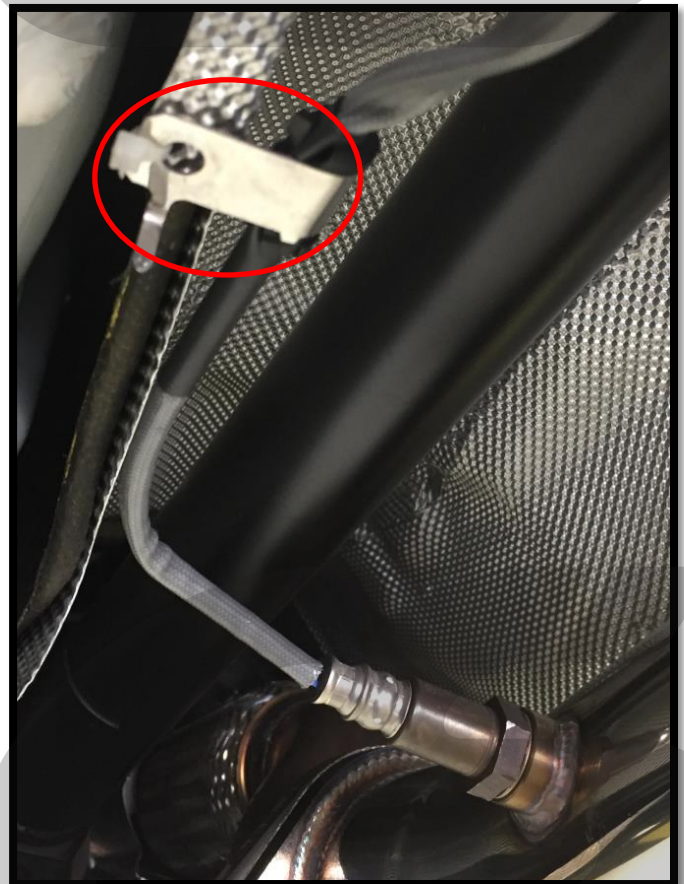


Figure 7b

8. Alignment of the CorkSport Catback

- a) **Align the exhaust tips and hangers so the exhaust is straight and centered.** Figure 8c shows how the exhaust tips should look when properly aligned.



The tips of the exhaust should fit perfectly within the arched exhaust cut outs in the bumper and should not rub the under body heat shields or sub frame.



Misalignment of the axle back muffler section could result in melting the exhaust cut out sections of the bumper cover. Make sure there is about a one inch gap between the exhaust tip and the bumper.

- b) **Tighten nuts on OE downpipe to 35-40 ft-lbs with a 14mm socket.**
- c) **Tighten all supplied hardware to 35-40 ft-lbs with a 17mm socket and end wrench.**
- d) **Double check tip position for clearance.** Figure 8c shows final installed location.

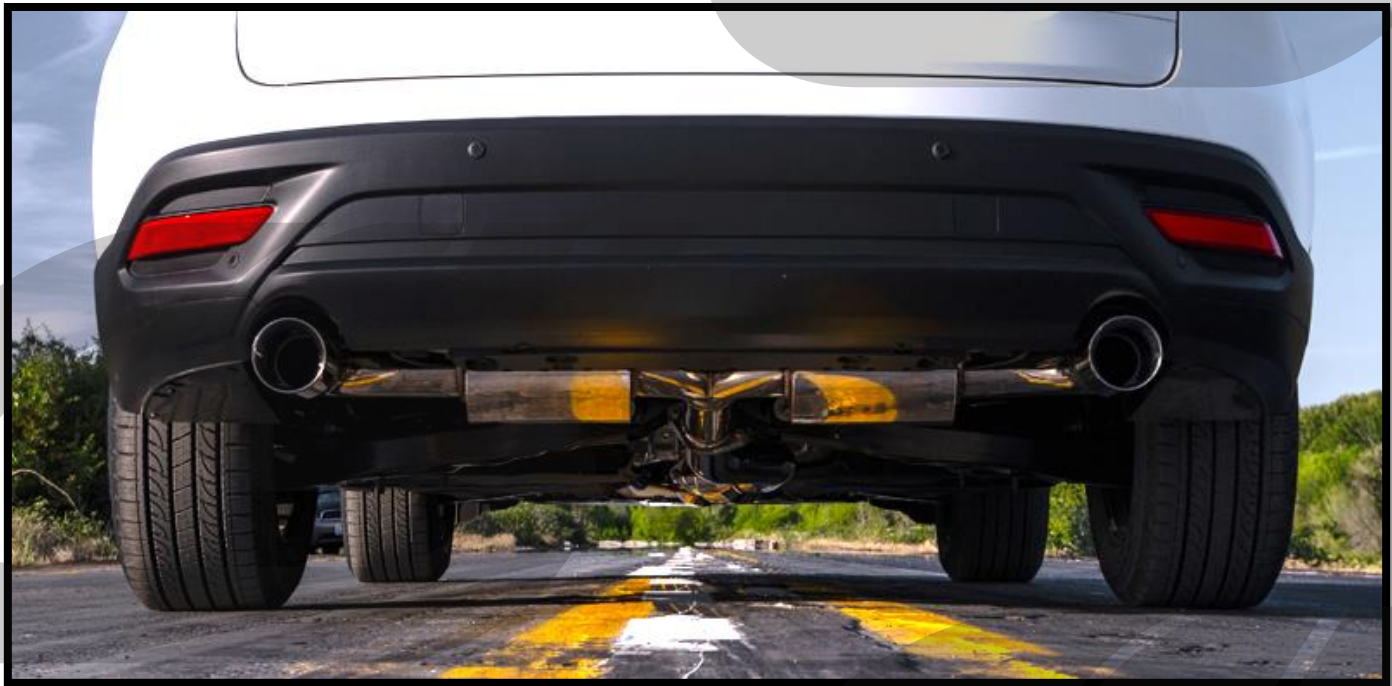


Figure 8c



This completes the installation of your CorkSport Cat Back Exhaust. Bring the car down off the jack stands and start the car. Use a flashlight to check under the car to ensure that you do not see any visible exhaust fumes and listen for leaks (usually a whispering tick sound at the flange). If there are leaks, 99% of the time a flange has been over tightened or is misaligned. There may be a burning off smell as the exhaust is heated for the first time. This smell will go away after some driving.