

## CorkSport Aluminum Skid Plate

2014-2016 Mazda 3



**Thank you for purchasing the CorkSport Aluminum Skid Plate.** Utilizing laser cut and precision formed 0.090" aluminum, our skid tray is a great replacement for a broken plastic unit or just for those wanting some extra piece of mind in their lowered car.

Please let us know what you think by leaving a review here:

<https://corksport.com/skidplate-for-2014-2016-mazda-3.html>

### Pre-Installation Notes:



**Make sure your vehicle is on a level surface** and supported by jack stands (not a hydraulic jack) prior to starting installation. Refer to service manual for lifting and jack stand locations.



**Make sure your vehicle completely cooled down prior to starting this install.** You will be near the exhaust and other potentially hot engine components during this install.



**These instructions were written for reference only** and the use of a factory service manual is recommended. Please read these instructions thoroughly prior to starting installation



**These instructions were written with the use of a 2016 Mazda 3.** Other Mazda 3 models and years for 2014-2016 will be similar.

### Materials and Time:



#### General Info.

Part #: AXM-8-100-10

Time Est: 1 hours

Wrench Rating: 2/5



#### Tooling List

8mm Socket  
10mm Socket  
4mm Allen Wrench  
Flathead Screwdriver  
T-20 Torx  
Bit/Screwdriver



#### Parts List

- One (1) Skid Plate Rear Section
- One (1) Oil Access Cover
- One (1) Skid Plate Front Section
- Seven (7) Extruded U-Nuts
- Five (5) No 8 Screws
- Five (5) M6x40 Stainless Button Head Screws
- Two (2) M6x30 Stainless Button Head Screws
- Two (2) M6x30 Stainless Button Head Screws
- Two (2) 1/2" Nylon Spacers
- Two (2) 1" Nylon Spacers

Need Help With Your Installation?

Call (360) 260-CORK

## Order of Operations & Table of Contents



**OEM Disassembly**

Section 1: OEM Undertray Removal

Pg. 2-3



**CorkSport Aluminum Skid Tray Installation**

Section 2: Installing Rear Section of CorkSport Skid Tray

Pg. 3-4

Section 3: Installing Front Section of CorkSport Skid Tray

Pg. 5

## Detailed Instructions

### 1. OEM Undertray Removal

a) Use a floor jack and jackstands to gain access to the underside of the vehicle.



Always refer to the floor jack and jack stand manufactures instructions as well as the factory owners manual for your vehicle to determine jacking points and support points. Alternately, use an automotive lift to gain access to the underside of the vehicle.

b) Remove rear section of OE engine undertray.

- 1) Using a push-clip remover or flathead screwdriver remove six (6) push-clips (circled in red in Figure 1a).
- 2) Using 10mm socket, remove eight (8) bolts (circled in blue in Figure 1a). Do not discard this hardware you will be reusing some of it later.



Figure 1a

## Detailed Instructions

### 1. OEM Undertray Removal (continued)

c) Remove front section of OE engine undertray.

- 1) Using a push-clip remover or flathead screwdriver remove three (3) push-clips (circled in red in Figure 1b).
- 2) Using 8mm socket, remove four (4) bolts (circled in blue in Figure 1b). Do not discard this hardware you will be reusing it later.

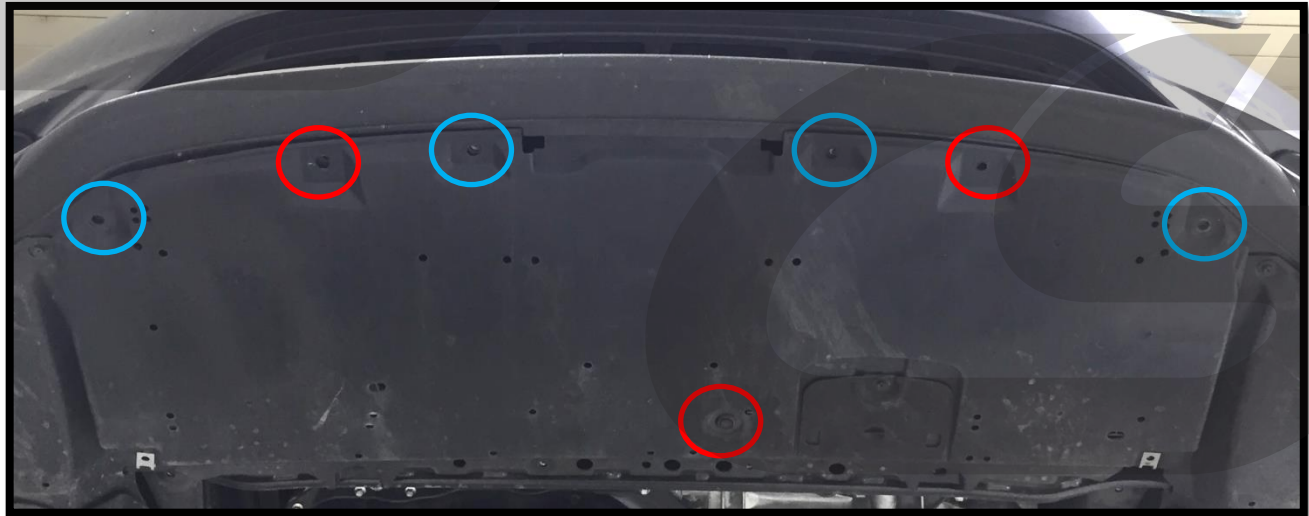


Figure 1b

### 2. Installing Rear Section of CorkSport Skid Plate

- a) Install two (2) extruded U-nuts onto the tabs the rearmost push clips were removed from (one shown circled in red in Figure 2a). Push the U-nuts on until the threaded portion is centered in the hole in the tab.

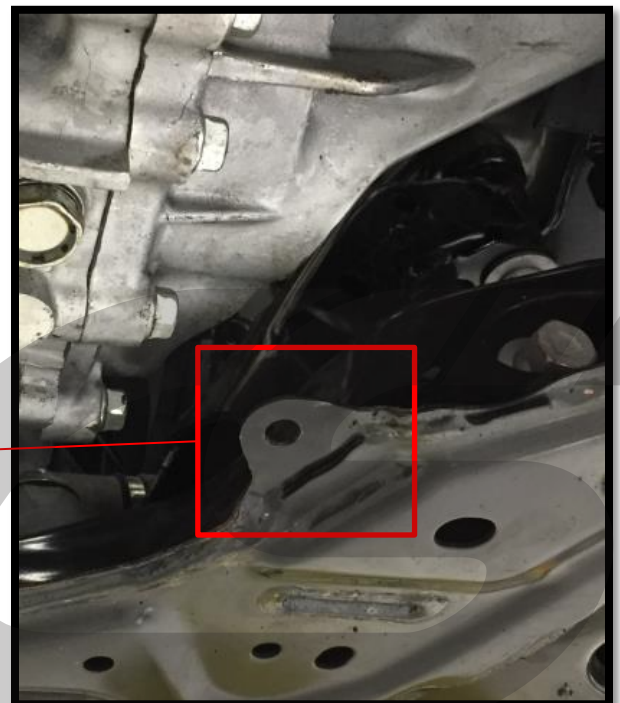


Figure 2a

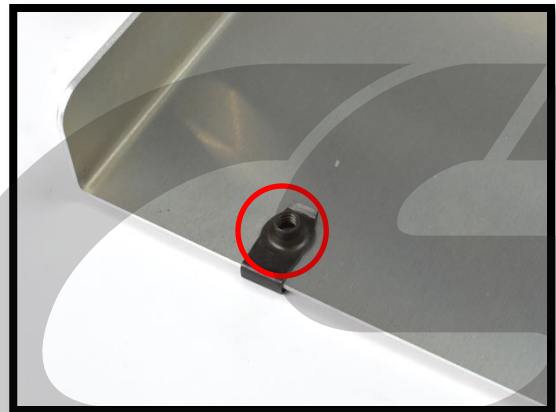
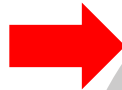
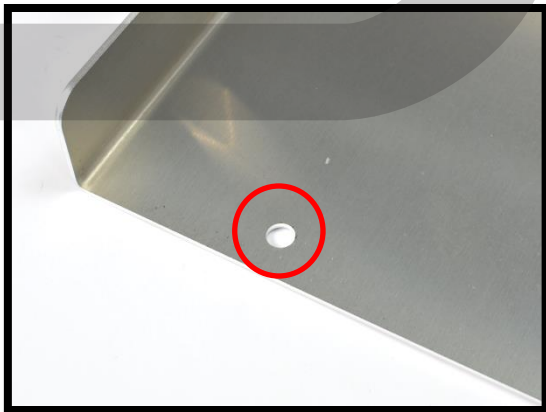
## Detailed Instructions

### 2. Installing Rear Section of CorkSport Skid Plate (continued)

- a) Install five (5) extruded U-nuts onto the five holes in the rear section of the CorkSport skid plate. **Circled in red in Figure 2b.**



Figure 2b



## Detailed Instructions

### 2. Installing Rear Section of CorkSport Skid Plate (continued)

- c) Lift the Rear Section of the CorkSport Skid Plate into place and secure with two (2) OE 10mm bolts in the locations circled in red in Figure 2c.

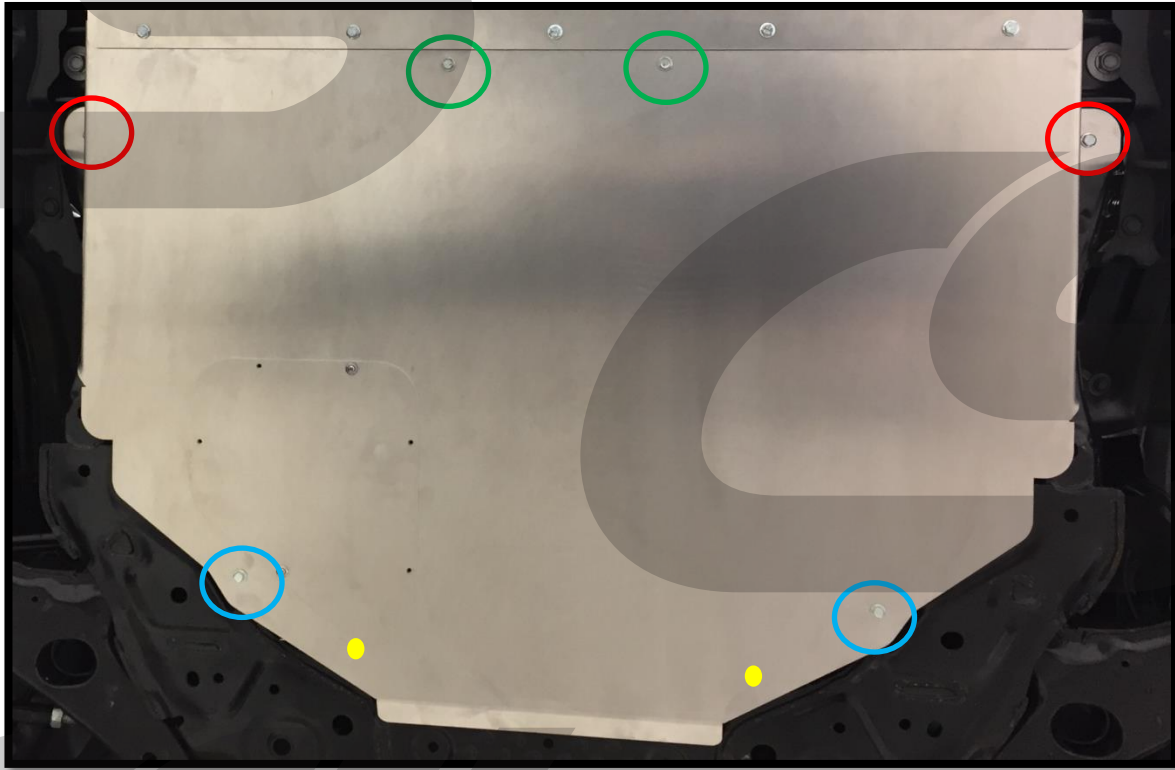


Figure 2c

Holes at yellow dots not used for installation.  
This are for shipping only

- d) Place two (2) ½" nylon spacers above the holes in the skid tray circled in blue in Figure 2c. Figure 2d shows how the spacers should look when installed.
- e) Align the ½" nylon spacers with the previously installed U-nuts and two (2) supplied M6x30 button head screws as shown in Figure 2d torque to 10-14 ft-lbs.
- f) Place two (2) 1" nylon spacers above the middle holes in the skid tray. Circled in green in Figure 2c.
- g) Align the 1" nylon spacers with existing OE tapped holes and secure with two (2) supplied M6x40 button head screws torqued to 10-14 ft-lbs.
- h) Secure the oil access cover with the five (5) provided No8 Torx head screws. Tighten hand tight.

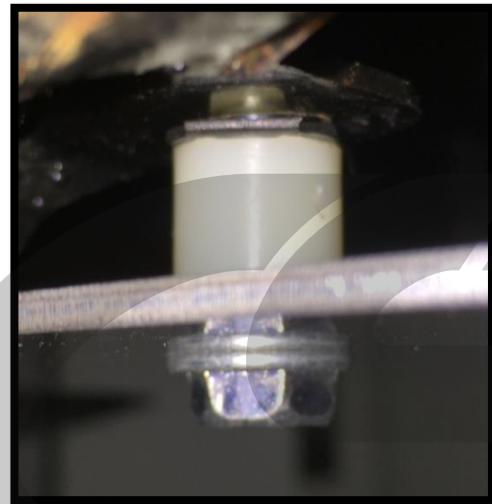


Figure 2d

## Detailed Instructions

### 3. Installing the Front Section of CorkSport Skid Plate

- a) **Lift the Front Section of the CorkSport Skid Plate into place.** Ensure the front tab sits on top of the bottom of the bumper. Proper fitment shown in **Figure 3a** with **red circle**.
- b) **Secure the front section by reusing the four (4) 8mm OE bolts that were removed earlier.** Locations shown with **blue circles** in **Figure 3a**.



Leaving the front bumper bolts slightly loose in the slots will help with joining the two skid tray sections together.

- c) **Attach the two pieces of the CorkSport Skid Plate together** using five (5) M6x16 button head screws in the previously installed U-nuts. Locations shown with **green circles** in **Figure 3a**. **Toque to 10-14 ft-lbs.**

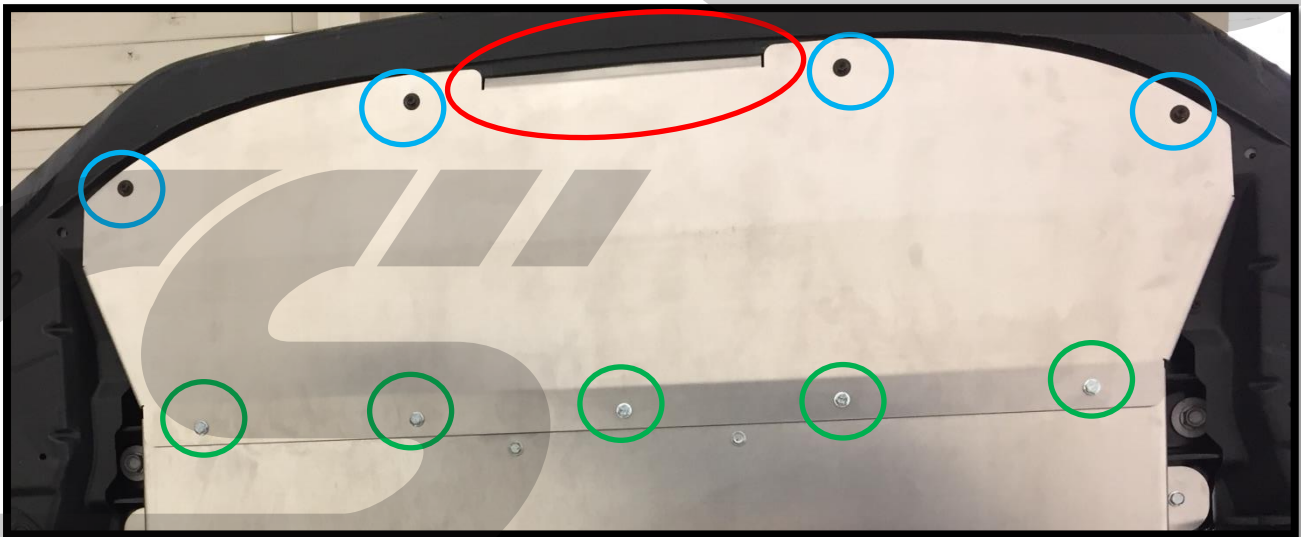


Figure 3a



This completes the installation of your CorkSport Aluminum Skid Plate for 2014-2016 Mazda 3. Enjoy the new protection and let us know what you think online at [CorkSport.com](http://CorkSport.com)

What's Next:

## CorkSport 2014+ Mazda 3 SkyActiv Power Series Short Ram Intake 2.0 & 2.5

One of the easiest and most beneficial performance enhancements you can do for your vehicle, the CorkSport Power Series Short Ram Intake replaces your factory airbox with an open intake system allowing more air into the intake chamber. Engineered with exacting tolerances, the CorkSport SkyActiv Short Ram Intake includes our precision machined MAF housing made from billet aluminum, a durable dry flow air filter and custom reinforced silicone connector.



## CorkSport 2014+ Mazda 3 Cat-Back Exhaust

Gain more horsepower and torque with CorkSport's 2014+ Mazda 3 cat back exhaust system for Sedans and Hatchbacks. Create a free-flowing system without restrictions. Our optional polyurethane exhaust hangers give your ride that extra level of detail you're seeking, while better controlling the exhaust movement as you tear up a country road.



## CorkSport 2014+ Lowering Springs

Give your car the performance appearance and edge you have been looking for with the CorkSport Lowering Springs for the Mazda 3. By reducing ride height approximately 1.75" in the front and 2.00" in the rear, adding the CorkSport Lowering Springs to your Mazda 3 will result in a quicker turning response, crisper road feel, a more aggressive appearance, and a firmer spring rate, all while maintaining excellent ride quality.

