

# CorkSport Performance

## AXE-8-010 License Plate Relocation Kit

Installation Instructions for the CorkSport Performance License Plate Relocation Kit for the 2007-2009 Mazdaspeed 3

Written By: Cody Dunton



## INTRODUCTION

In this installation guide we have provided step by step instructions to install the CorkSport Performance License Plate Relocation Kit.

### TOOLS:

- Medium Phillips Head Screwdriver (1)
- 10mm Socket-Deep (1)
- Small Flathead Screwdriver (1)
- 3/8" Ratchet (1)
- 17mm Socket - Deep (1)
- 1/4" Bit Driver (1)
- Wrench, 19mm (1)

### PARTS:

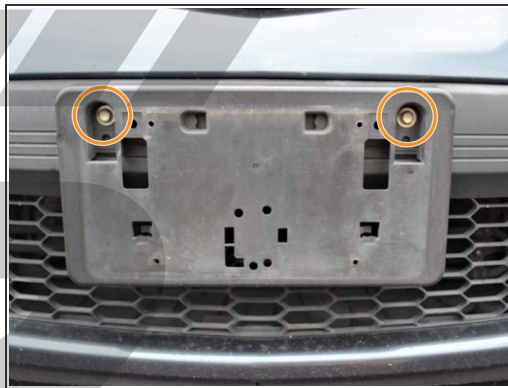
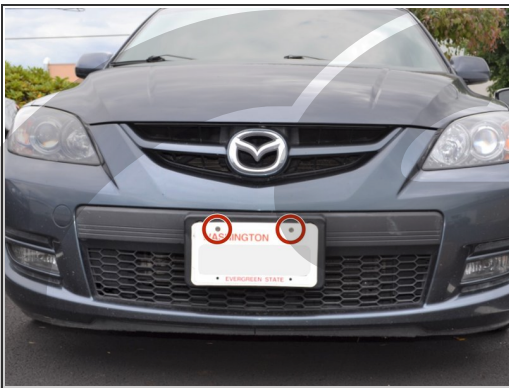
- CorkSport License Plate Bracket (1)
- CorkSport AXE Tow Hook Screw (1)
- CorkSport 19mm Wrench (1)
- M12x20mm Stainless Steel Hex Head Bolt (1)
- M12 Stainless Steel Washer (1)
- Security Hex Bit (1)
- Security Hex Screws (4)
- 1/4" Bumper Plugs (2)

## Step 1 — Getting Started



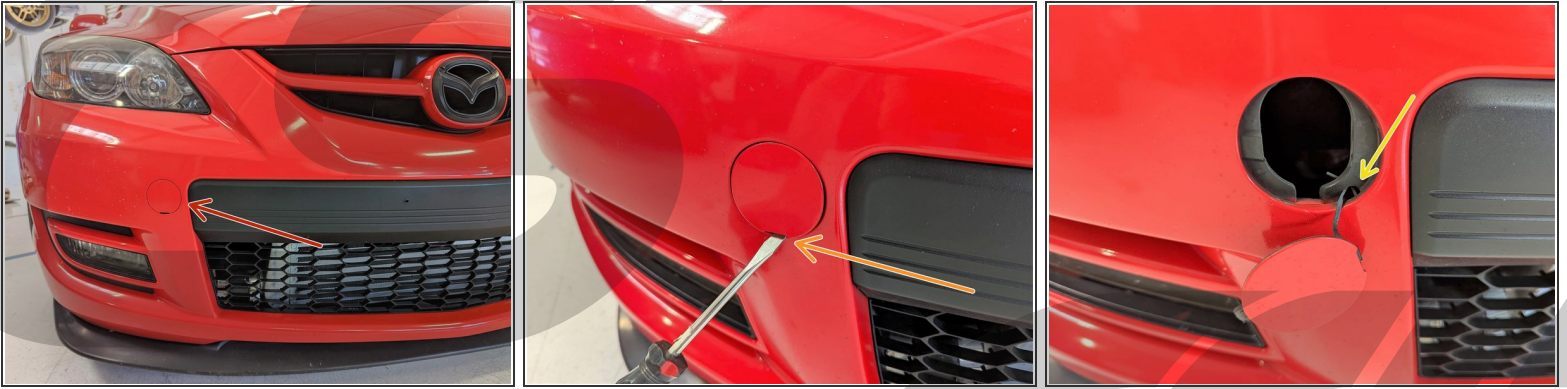
- First and foremost; **THANK YOU** for becoming a part of the CorkSport Family. We hope to bring you the highest level of Parts, Customer Service, & Support
- ⓘ How To Use These Instructions: The instruction format will relate colored marking in the image to the color dot in the text to the right of the image

## Step 2 — Remove the License Plate and OEM Bracket



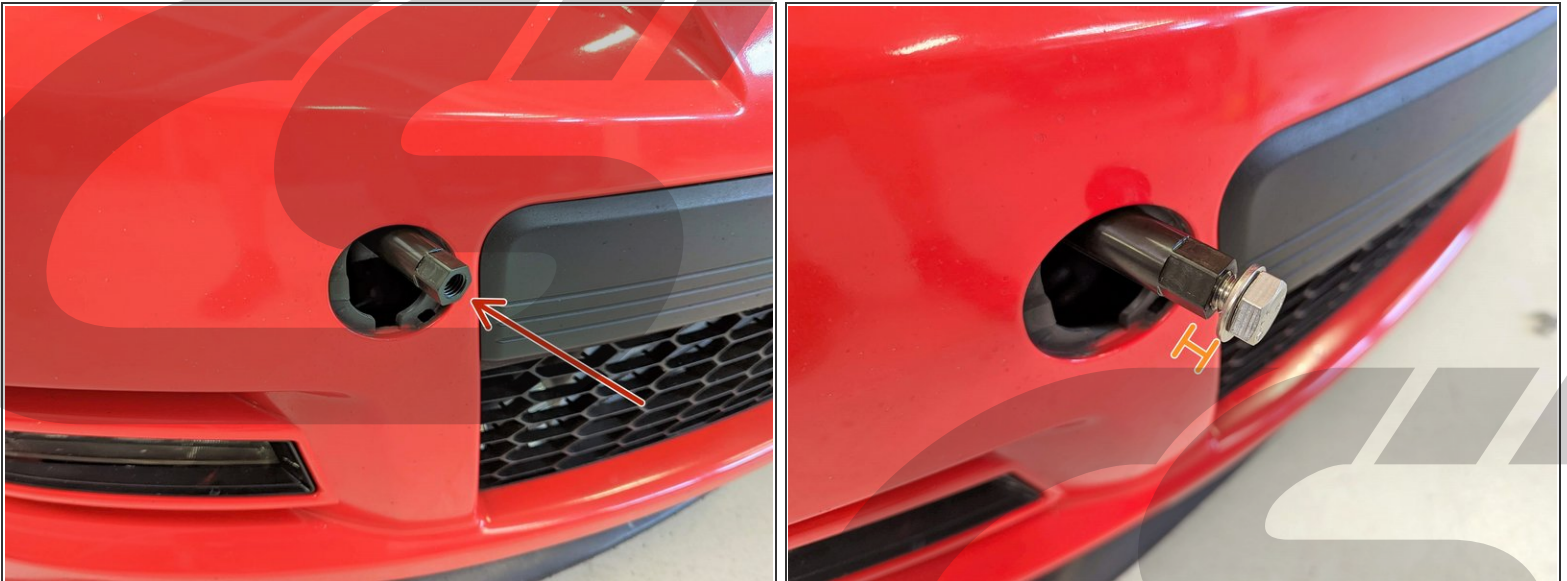
- Start by removing the License Plate using a Phillips screwdriver or 10mm socket and ratchet.
  - Using a 10mm socket and ratchet, remove the two bolts holding on the OEM License Plate Bracket.
  - **Optional:** Install the included plastic plugs into the holes in the bumper.
- ⚠ Using a 1/4" drill bit and drilling the holes larger may be required. This will require new hardware to be used if you want to return to using the OEM License Plate Bracket in the future

### Step 3 — Locate and Remove the Tow Hook Cover



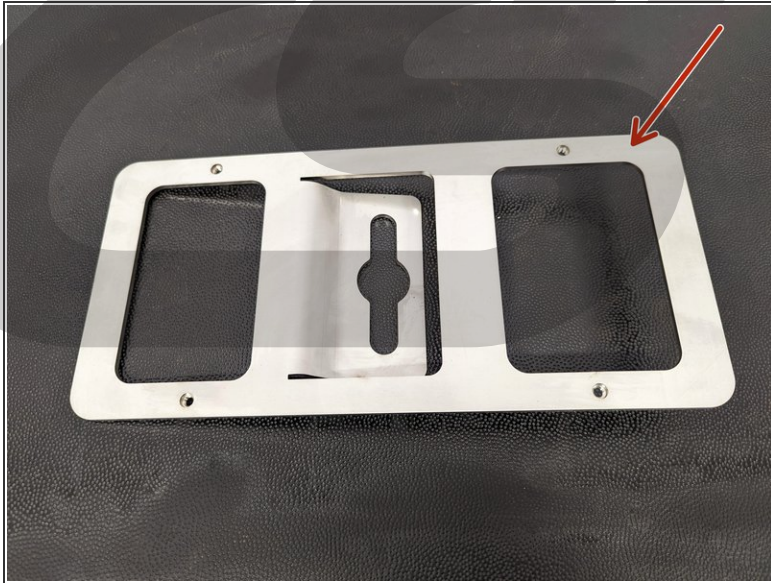
- Locate the Tow Hook Cover on the left side of the grill.
- Using a flat head screwdriver, gently push the tab on the inside of the cover up while prying outwards to remove.
- Remove the cover by gently pulling the end of the plastic tail that is in the grill.

### Step 4 — Install the CorkSport Tow Hook Screw



- Install the Tow Hook Screw using a 17mm socket and ratchet to 45 ft-lbs.
- Now install the Stainless Steel 19mm Bolt and Washer into the Tow Hook Stud, leaving ~ 1/4" of room between the Washer and Tow Hook Screw.

## Step 5 — Install the License Plate onto the CorkSport Bracket



- Place the CorkSport License Plate Bracket on a flat surface as shown.
  - ⓘ The right side of the bracket should be off the surface.
- Place your License Plate on the bracket and install the 4 security hex screws using a 1/4" bit driver and the included security bit until they are snug.

## Step 6 — Place the License Plate on the Standoff



- Line up the large hole in the License Plate Bracket with the bolt and washer and slide over the head of the bolt.
- Let the License Plate Bracket sit on the bolt as shown.
- Tighten down the bolt using either the included wrench or another 19mm wrench until the License Plate Bracket is snug, but can still be rotated by hand.

## Step 7 — Level the License Plate



- Rotate the license plate bracket until it is level on the car and tighten down the 19mm bolt until it is tight.
- ⓘ If parked on a flat surface you can place a level on top of the license plate to properly align it.

## Step 8 — Installation Complete



- This completes your installation of the CorkSport Performance License Plate Relocation Kit!
- ⓘ Check the License Plate Bracket after driving to ensure that it remains tight.
- Contact us with any questions or concerns at [sales@corksport.com](mailto:sales@corksport.com) or (360) 260-2675.
- Please leave a review here: <https://corksport.com>
- Share your experience using #CorkSport on Instagram, Facebook, and Twitter.