

Part # Axl-6-122

CorkSport
MAZDA PERFORMANCE

CorkSport Mazda 3 SkyActiv Cold Air Box

2012-2013 Mazda 3



This Package should contain:

- 1. One (1) Airbox Assembly
- 2. One (1) Bolt/nut/washer assembly

Kit Assembly By: _____

Date: _____

CorkSport Mazda 3 SkyActiv Cold Air Box

2012-2013 Mazda 3



Thank you for purchasing the CorkSport Cold Air Box for the Mazda 3 Skyactiv. Designed to be used with the CorkSport short ram intake, this box can help keep air temperatures low while providing the same flow as you would normally get with a short ram. Please let us know your feedback about the CorkSport Mazda 3 SkyActiv Cold Air Box by submitting a review at:

<http://www.corksport.com/corksport-2010-mazda-3-skyactiv-air-box-for-corksport-sri.html>

Pre-Installation Notes:



Make sure your vehicle is completely cooled down prior to starting installation. If you are going to work on your car within an hour or two of having driven it, use a fan to cool off the car.



These instructions were written for reference only and the use of a factory service manual is recommended. Please read these instructions thoroughly prior to starting installation



How our instructions work: To best cover all of our customers experience levels, we have included an overview checklist for the more technically advanced users along with step-by-step instructions for customers that require additional detail.



These installation instructions were written using a 2012 Mazda 3 SkyActiv. Other year Mazda 3 SkyActiv models will be similar.

Materials and Time:



General Info.

Part #: Axl-6-122
Time Est: 0.5 hours
Wrench Rating: 2/5



Tooling List

10mm Deep Socket
10mm Endwrench
Needle nose pliers
5mm Allen Wrench
3/8" Drive Ratchet



Parts List

One (1) CorkSport Cold Air Box Assembly
One (1) 10mm Collar Bolt

Need Help With Your Installation?

Call (360) 260-CORK

Checklist

This is an overview of each step in the build. You can use this as a reference and a checklist as you button up the work on your car

1. Remove the CS intake MAF and Filter

- a) **Disconnect the MAF Connection and verify all wiring is free from original connection points.** MAF connection shown circled in red in Figure 1a. Original Connection points are shown with red arrow in Figure 1a.
- b) **Disconnect additional connector at corner of battery box.** Shown with red circle in Figure 1b.
- c) **Loosen the T-bolt clamp circled in green and remove the MAF and Cone Filter.** Shown in Figure 1a.

2. Install the CorkSport Cold Air Box

- a) **Place air box in down onto frame rail.** The bolt that comes out of the box will connect to the grommet above the frame rail. Shown circled in Figure 2a.
- b) **Align the bracket to the metal bracket to the factory mounting hole and install the factory 10mm bolt.** Shown with no bracket in Figure 2b.
- c) **Tighten the 10mm bolt that is attached to the Cold Airbox.** Shown circled in Figure 2c.
- d) **Reinstall the MAF housing with air filter and clamp that was removed earlier.** Clamp Shown circled in Green in Figure 2d.
- e) **Reconnect the MAF Connection and verify wiring is routed through the open side of the air box.** MAF connection shown circled in red in Figure 2d and wiring location is shown with red arrow in Figure 2e.
- f) **Install Lid with Provided Allen Bolts.** They will use a 5mm Allen Wrench.



This completes the installation of the CorkSport Air Box shown Figure 2f. Make sure the filter and wiring are not rubbing on anything and take the car for a drive. Check out our [knowledgebase](#) for additional install information.

Detailed Instructions

1. Remove the CS intake MAF and Filter

- a) **Disconnect the MAF Connection and verify all wiring is free from original connection points.** MAF connection shown circled in red in Figure 1a. Original Connection points are shown with red arrow in Figure 1a.
- b) **Disconnect additional connector at corner of battery box.** This can be accessed from inside the battery box. Squeeze the connector together inside the battery box with needle nose pliers. Shown with red circle in Figure 1b.
- c) **Loosen the T-bolt clamp circled in green and remove the MAF and Cone Filter.** Shown in Figure 1a.

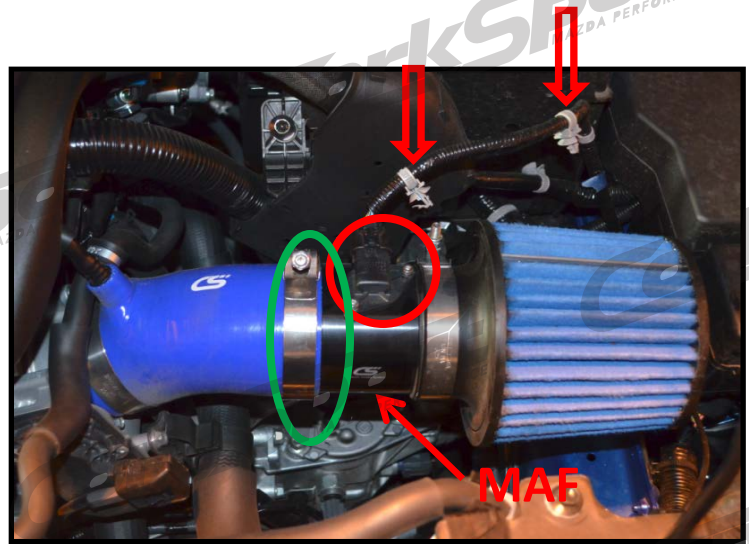


Figure 1a

2. Install the CorkSport Cold Air Box

- a) **Place air box in down onto frame rail.** The bolt that comes out of the Cold Air box will connect to the grommet above the frame rail, just to the front of the battery box. Shown with red circle in Figure 2a.

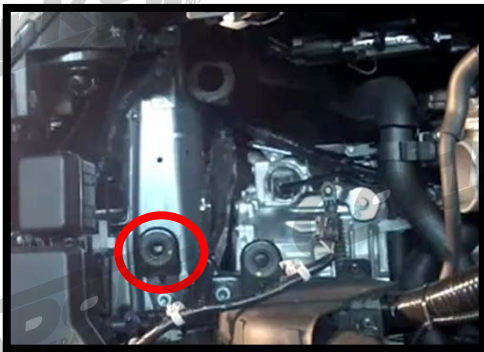


Figure 2a

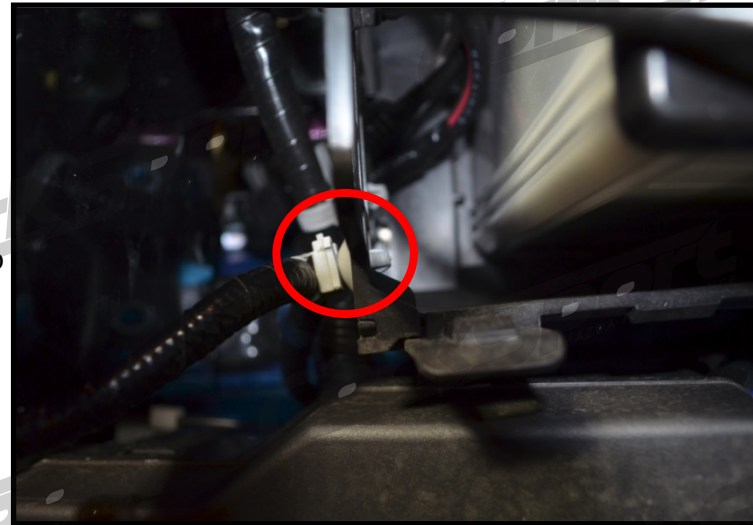


Figure 1b

- a) **Align the bracket to the metal bracket to the factory mounting hole and install the factory 10mm bolt.** Shown with no bracket in Figure 2b. Factory bolt is circled in red. If you have lost your factory bolt there is a extra provided 10mm bolt.
- c) **Tighten the 10mm bolt that is attached to the Cold Airbox.** Hold the bolt head on the outside of the box with a 10mm end wrench and tight the inside nut with another 10mm wrench or socket. Shown circled in Figure 2c on next page

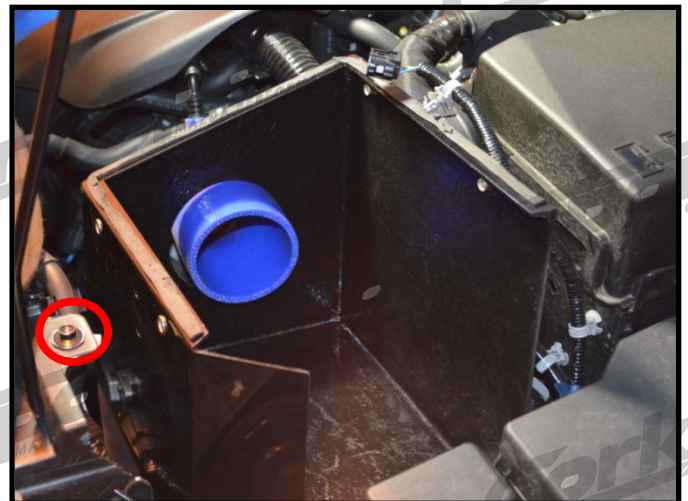


Figure 2b

2. Install the CorkSport Cold Air Box Continued...

- d) Reinstall the MAF housing with air filter and clamp that was removed earlier. Clamp Shown circled in Green in Figure 2d.

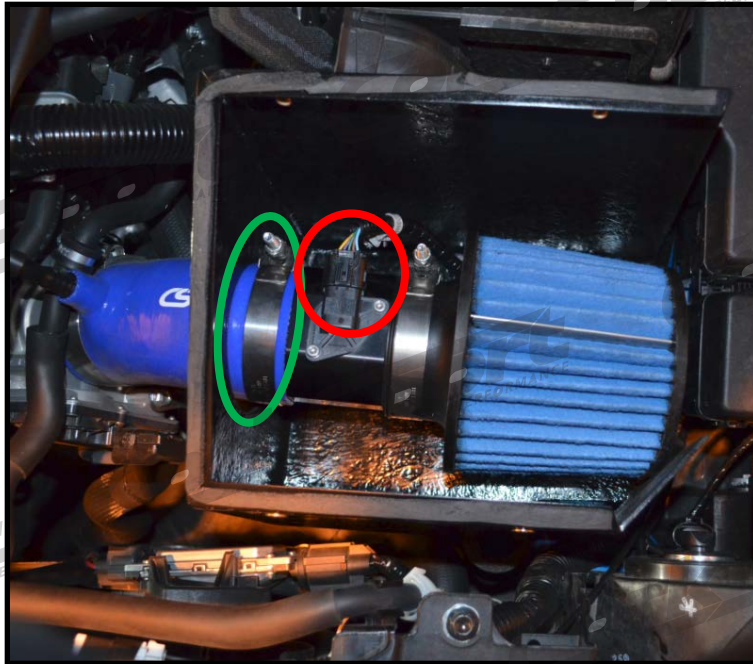


Figure 2d

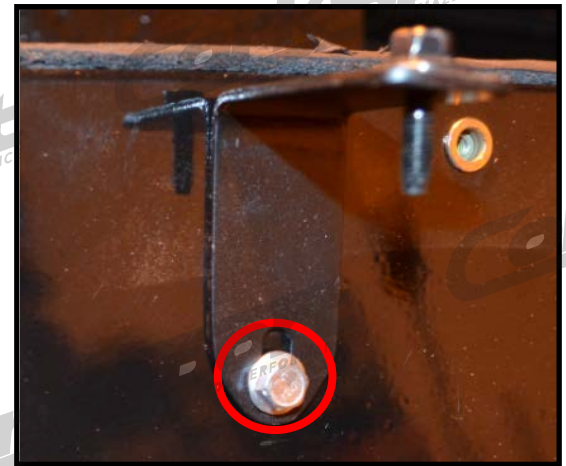


Figure 2c

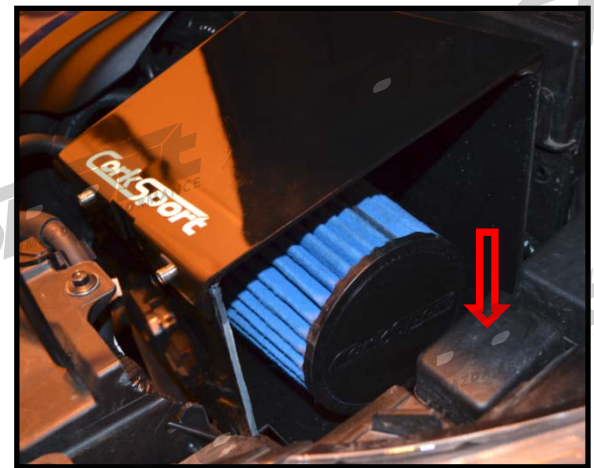


Figure 2e

- e) Reconnect the MAF Connection and verify wiring is routed through the open side of the air box. MAF connection shown circled in red in Figure 2d and wiring location is shown with red arrow in Figure 2e.

- f) Install Lid with Provided Allen Bolts. They will use a 5mm Allen Wrench.



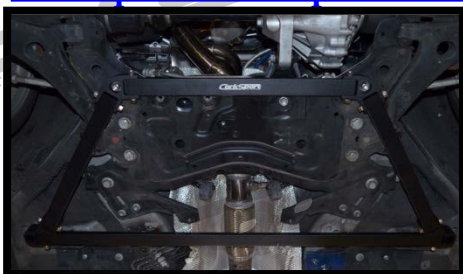
This completes the installation of the CorkSport Air Box shown Figure 2f. Make sure the filter and wiring are not rubbing on anything and take the car for a drive. Check out our [knowledgebase](#) for additional install information.



Figure 2f

What's Next:

[CorkSport Mazdaspeed 3 and Mazda 3 Underbody 4-Brace Set](#)



Reduce undesirable chassis flex and increase control during hard cornering and acceleration with the CorkSport Mazdaspeed 3 and Mazda 3 underbody 4-bar brace set.

Need Help With Your Installation?

Call (360) 260-CORK